

Legend

-  Strategic Gap between NW Bicester and Bucknell (for BIC H1)
-  Archaeological Constraint Areas for KID H1
-  New Green Space/Parks for KID H1
-  Residential Area for KID H1
-  Strategic Housing Site
-  New Employment Site
-  Split Uses for BAN M/U1
-  Mixed-Use Site
-  Saved Local Plan Allocations
-  Saved Partial Review Site Allocations
-  Committed Housing Site
-  Committed Employment Site
-  Safeguarded Land
-  Banbury Primary Shopping Area
-  Banbury Town Centre Shopping Area
-  Bicester Primary Shopping Area
-  Bicester Town Centre Shopping Area
-  Kidlington Primary Shopping Area
-  Kidlington Village Centre Shopping Area
-  Banbury Circular Walk/Oxford Canal Trail
-  East West Rail Safeguarded Surface Area
-  Areas of Outstanding Natural Beauty
-  Conservation Areas
-  Conservation Target Areas
-  Special Areas of Conservation
-  District Wildlife Sites
-  Local Wildlife Sites
-  Scheduled Monument
-  Sites of Special Scientific Interest
-  Registered Historic Parks and Gardens
-  Ancient Woodland
-  Registered Battlefields
-  Green Belt
-  Local Green Spaces
-  Existing Green Space
-  Nature Recovery Network (Oxon) - Core Zone
-  Nature Recovery Network (Oxon) - Recovery Zone
-  Safeguarded Infrastructure (Indicative)
-  Airport

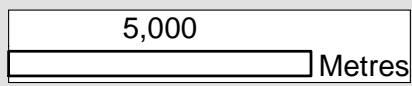
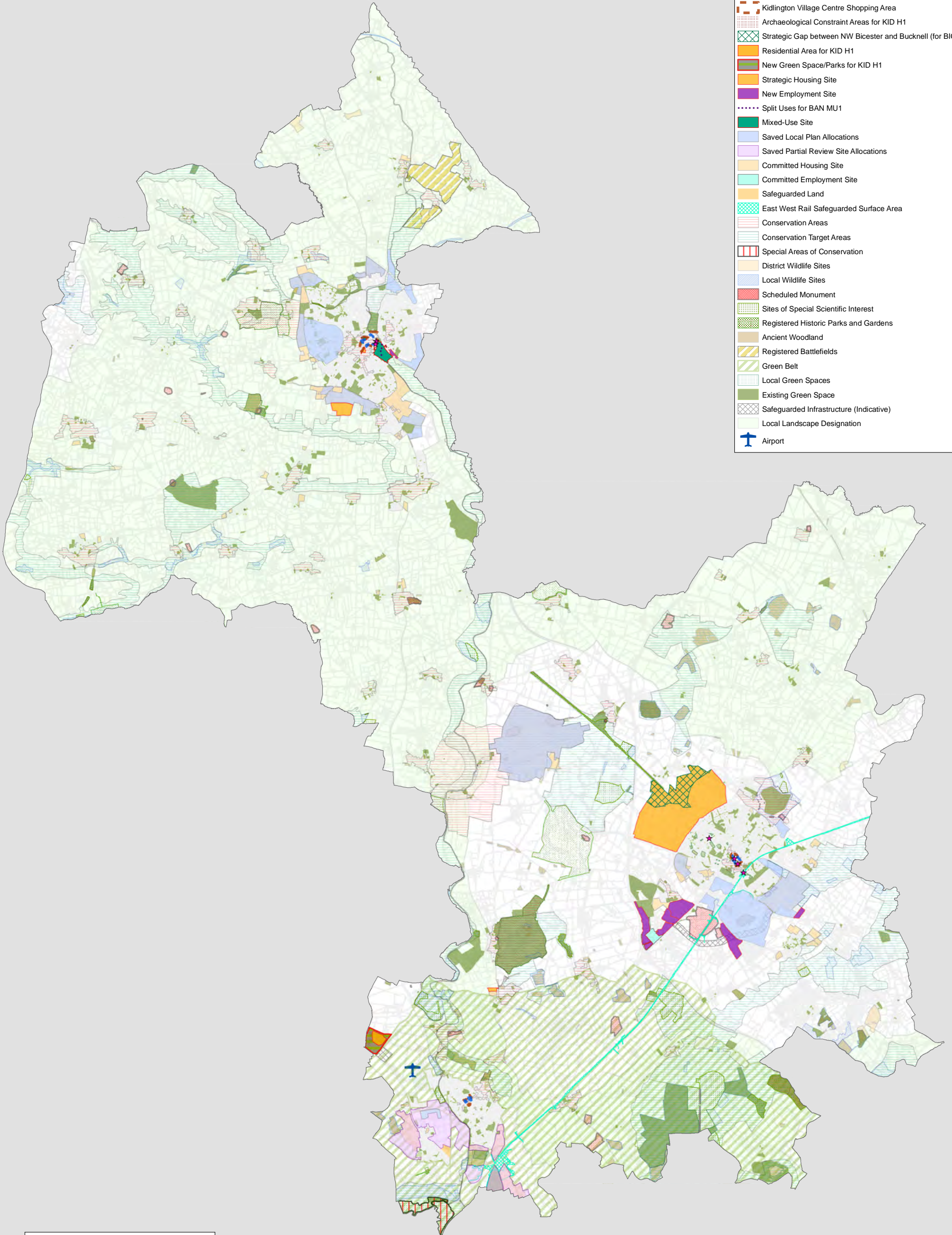
N



Policies Map

Legend

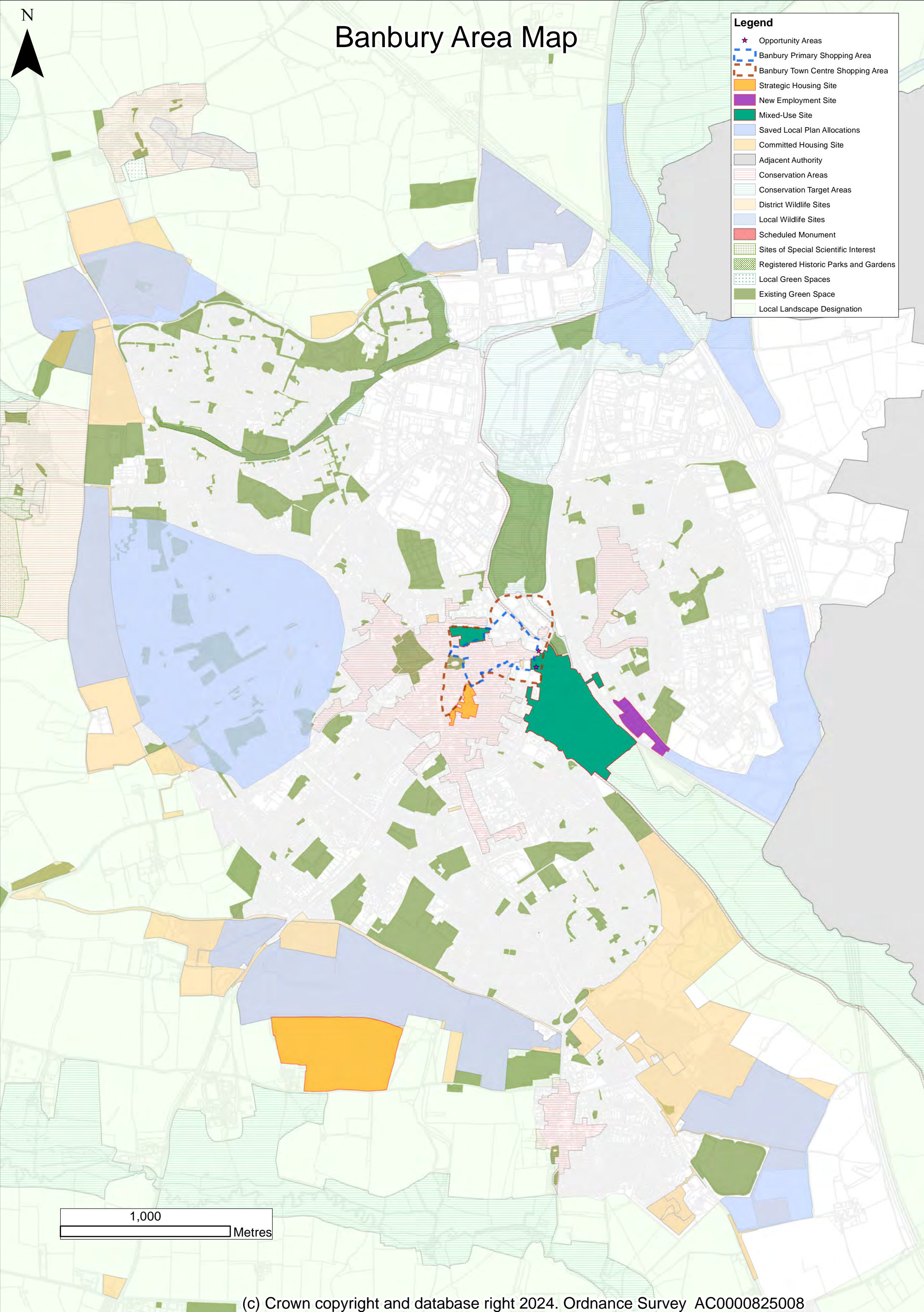
- ★ Opportunity Areas
- ▭ Banbury Primary Shopping Area
- ▭ Banbury Town Centre Shopping Area
- ▭ Bicester Primary Shopping Area
- ▭ Bicester Town Centre Shopping Area
- ▭ Kidlington Primary Shopping Area
- ▭ Kidlington Village Centre Shopping Area
- ▭ Archaeological Constraint Areas for KID H1
- ▭ Strategic Gap between NW Bicester and Bucknell (for BIC H1)
- ▭ Residential Area for KID H1
- ▭ New Green Space/Parks for KID H1
- ▭ Strategic Housing Site
- ▭ New Employment Site
- ⋯ Split Uses for BAN MU1
- ▭ Mixed-Use Site
- ▭ Saved Local Plan Allocations
- ▭ Saved Partial Review Site Allocations
- ▭ Committed Housing Site
- ▭ Committed Employment Site
- ▭ Safeguarded Land
- ▭ East West Rail Safeguarded Surface Area
- ▭ Conservation Areas
- ▭ Conservation Target Areas
- ▭ Special Areas of Conservation
- ▭ District Wildlife Sites
- ▭ Local Wildlife Sites
- ▭ Scheduled Monument
- ▭ Sites of Special Scientific Interest
- ▭ Registered Historic Parks and Gardens
- ▭ Ancient Woodland
- ▭ Registered Battlefields
- ▭ Green Belt
- ▭ Local Green Spaces
- ▭ Existing Green Space
- ▭ Safeguarded Infrastructure (Indicative)
- ▭ Local Landscape Designation
- ✈ Airport



Banbury Area Map



- Legend**
- ★ Opportunity Areas
 - ▭ Banbury Primary Shopping Area
 - ▭ Banbury Town Centre Shopping Area
 - ▭ Strategic Housing Site
 - ▭ New Employment Site
 - ▭ Mixed-Use Site
 - ▭ Saved Local Plan Allocations
 - ▭ Committed Housing Site
 - ▭ Adjacent Authority
 - ▭ Conservation Areas
 - ▭ Conservation Target Areas
 - ▭ District Wildlife Sites
 - ▭ Local Wildlife Sites
 - ▭ Scheduled Monument
 - ▭ Sites of Special Scientific Interest
 - ▭ Registered Historic Parks and Gardens
 - ▭ Local Green Spaces
 - ▭ Existing Green Space
 - ▭ Local Landscape Designation

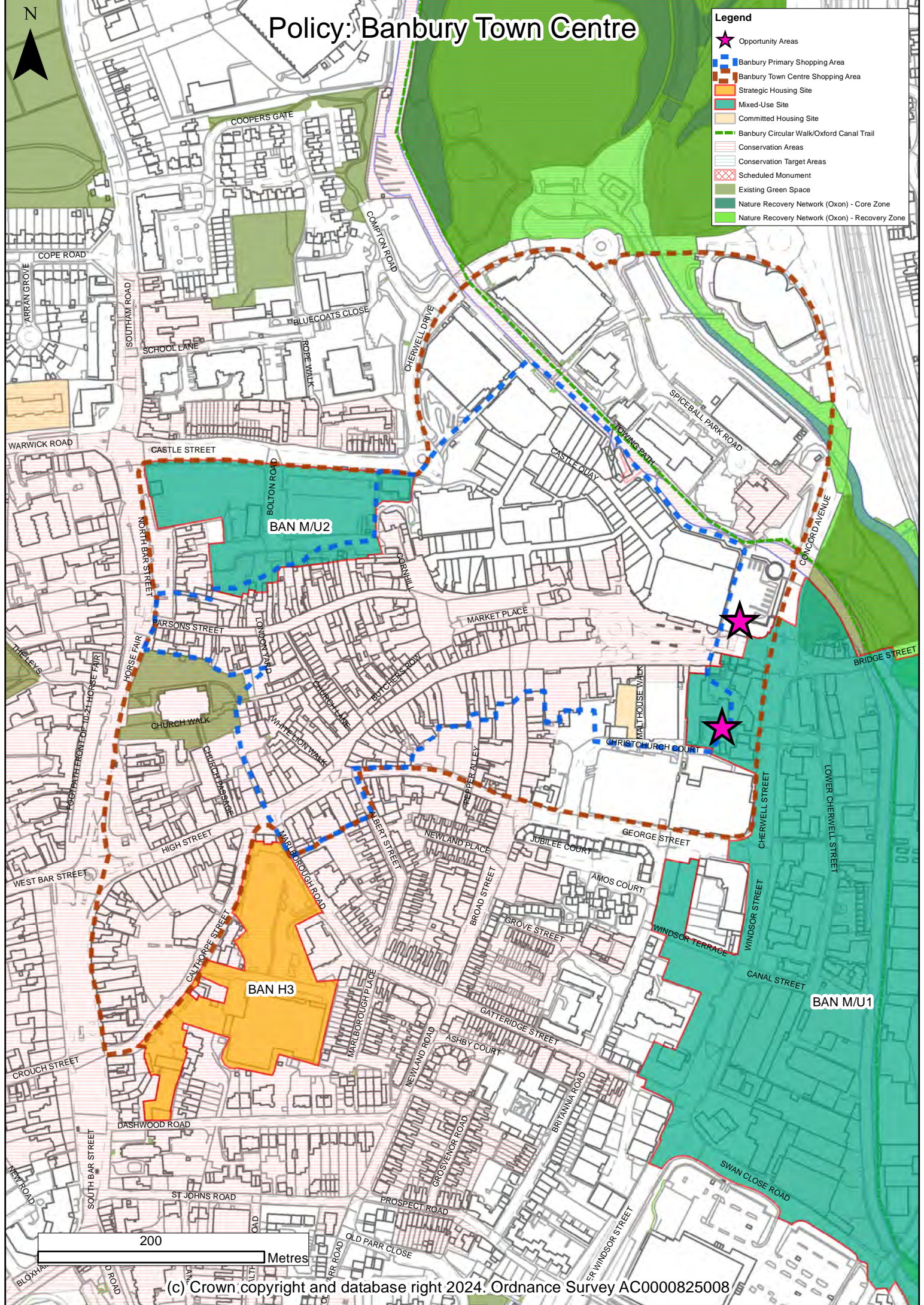


1,000 Metres

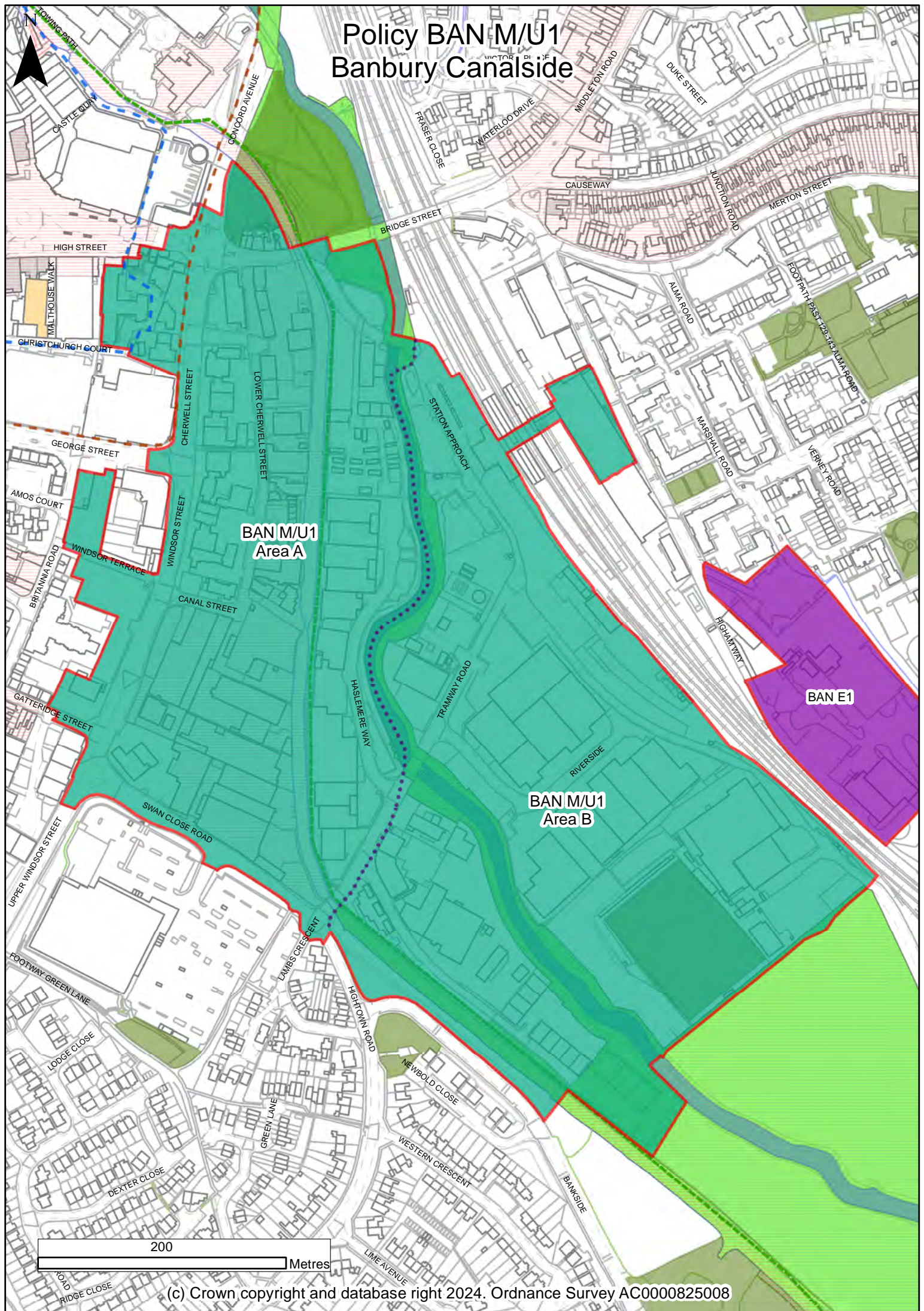
Policy: Banbury Town Centre



- Legend**
- Opportunity Areas (Pink star)
 - Banbury Primary Shopping Area (Blue dashed line)
 - Banbury Town Centre Shopping Area (Orange dashed line)
 - Strategic Housing Site (Orange solid area)
 - Mixed-Use Site (Green solid area)
 - Committed Housing Site (Light green solid area)
 - Banbury Circular Walk/Oxford Canal Trail (Green dashed line)
 - Conservation Areas (Pink hatched area)
 - Conservation Target Areas (Light blue hatched area)
 - Scheduled Monument (Red hatched area)
 - Existing Green Space (Light green solid area)
 - Nature Recovery Network (Oxon) - Core Zone (Dark green solid area)
 - Nature Recovery Network (Oxon) - Recovery Zone (Light green solid area)



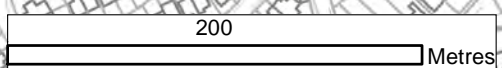
Policy BAN M/U1 Banbury Canalside



**BAN M/U1
Area A**

**BAN M/U1
Area B**

BAN E1



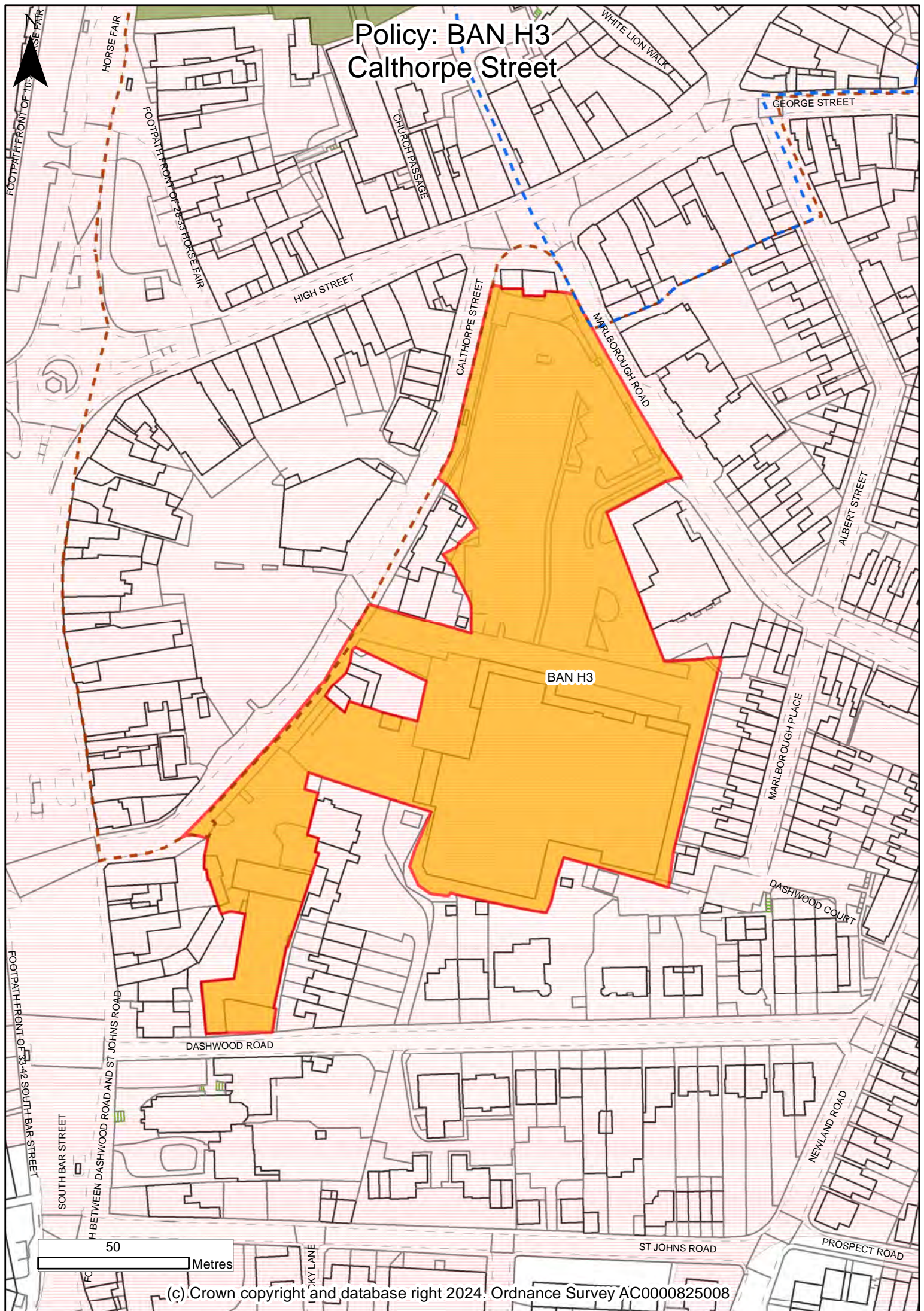


Policy: BAN H2
East of Bloxham Road, Banbury
(South of Salt Way East- Phase 2)

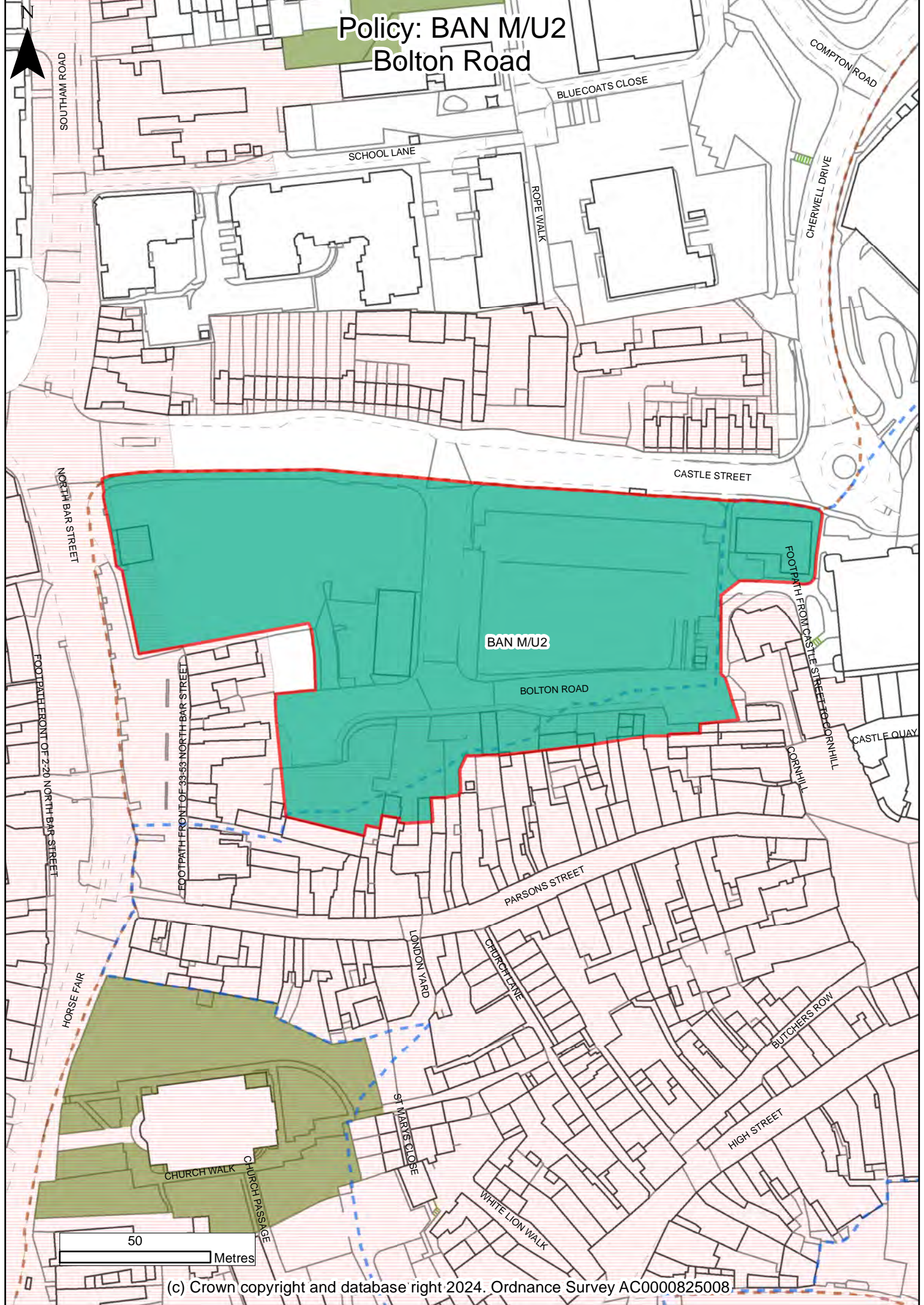
BAN H2

200
Metres

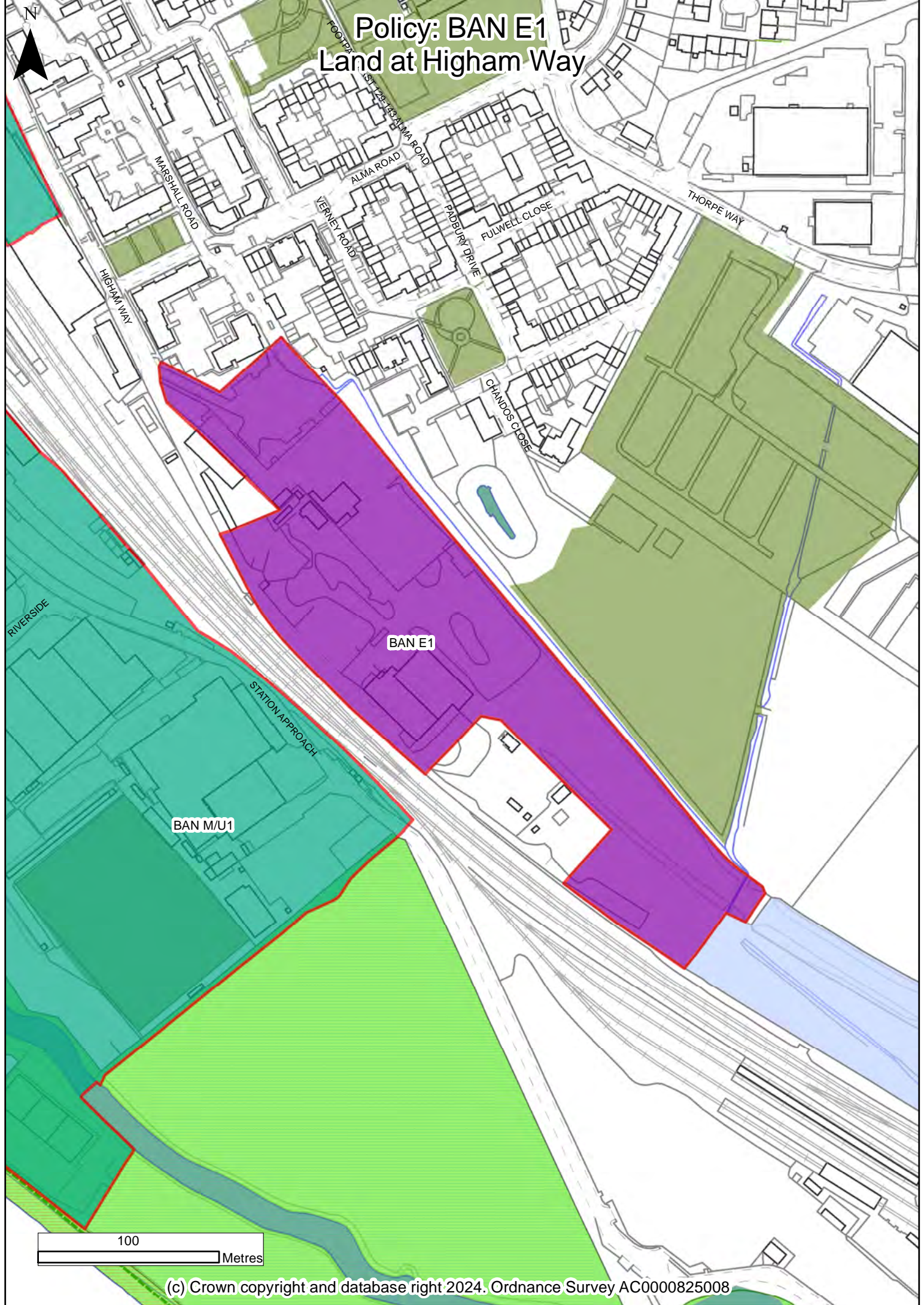
Policy: BAN H3 Calthorpe Street



Policy: BAN M/U2 Bolton Road



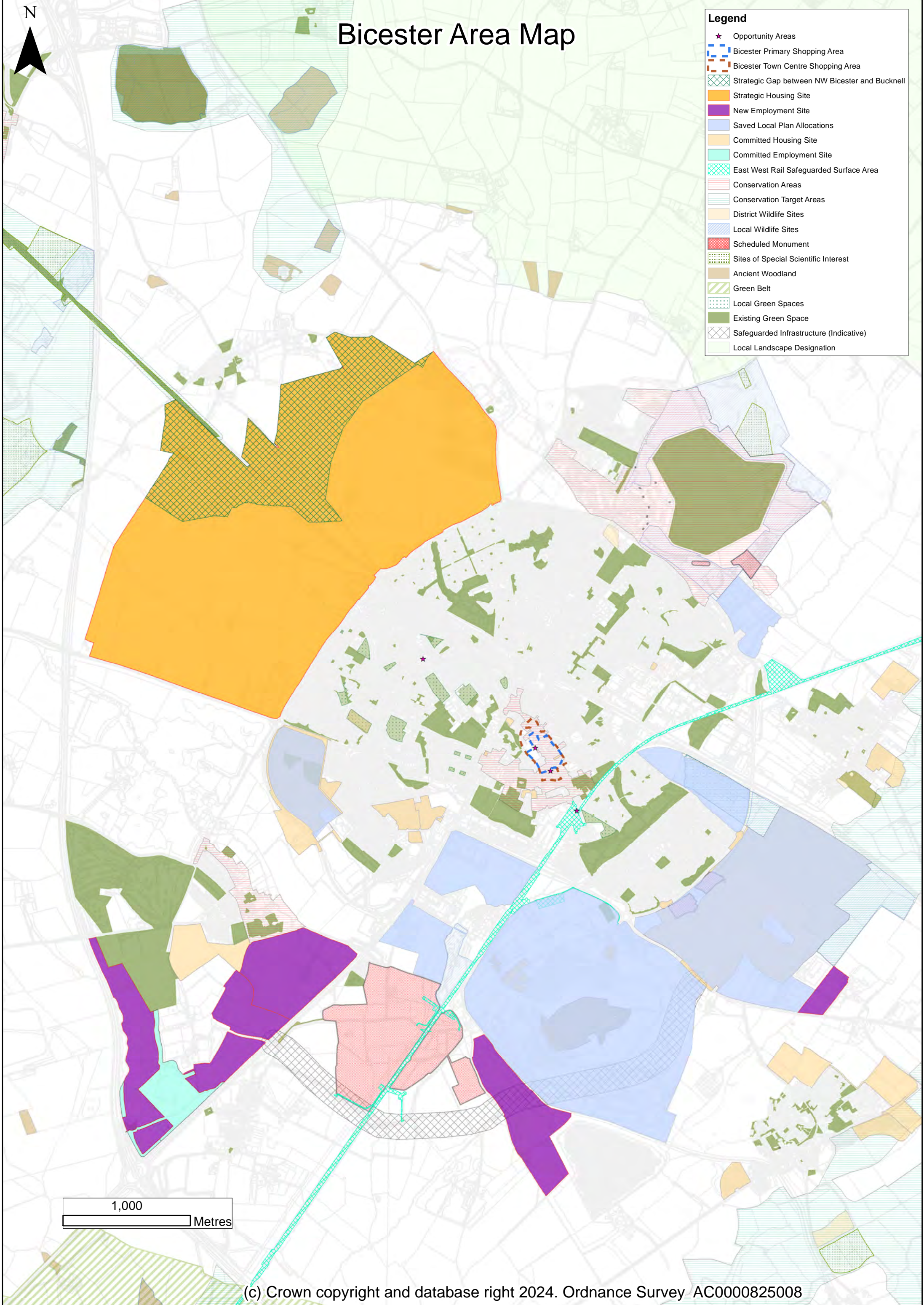
Policy: BAN E1 Land at Higham Way



N

Bicester Area Map

- Legend**
- ★ Opportunity Areas
 - Bicester Primary Shopping Area
 - Bicester Town Centre Shopping Area
 - ▨ Strategic Gap between NW Bicester and Bucknell
 - Strategic Housing Site
 - New Employment Site
 - Saved Local Plan Allocations
 - Committed Housing Site
 - Committed Employment Site
 - ▨ East West Rail Safeguarded Surface Area
 - ▨ Conservation Areas
 - ▨ Conservation Target Areas
 - ▨ District Wildlife Sites
 - ▨ Local Wildlife Sites
 - Scheduled Monument
 - ▨ Sites of Special Scientific Interest
 - Ancient Woodland
 - ▨ Green Belt
 - ▨ Local Green Spaces
 - Existing Green Space
 - ▨ Safeguarded Infrastructure (Indicative)
 - ▨ Local Landscape Designation

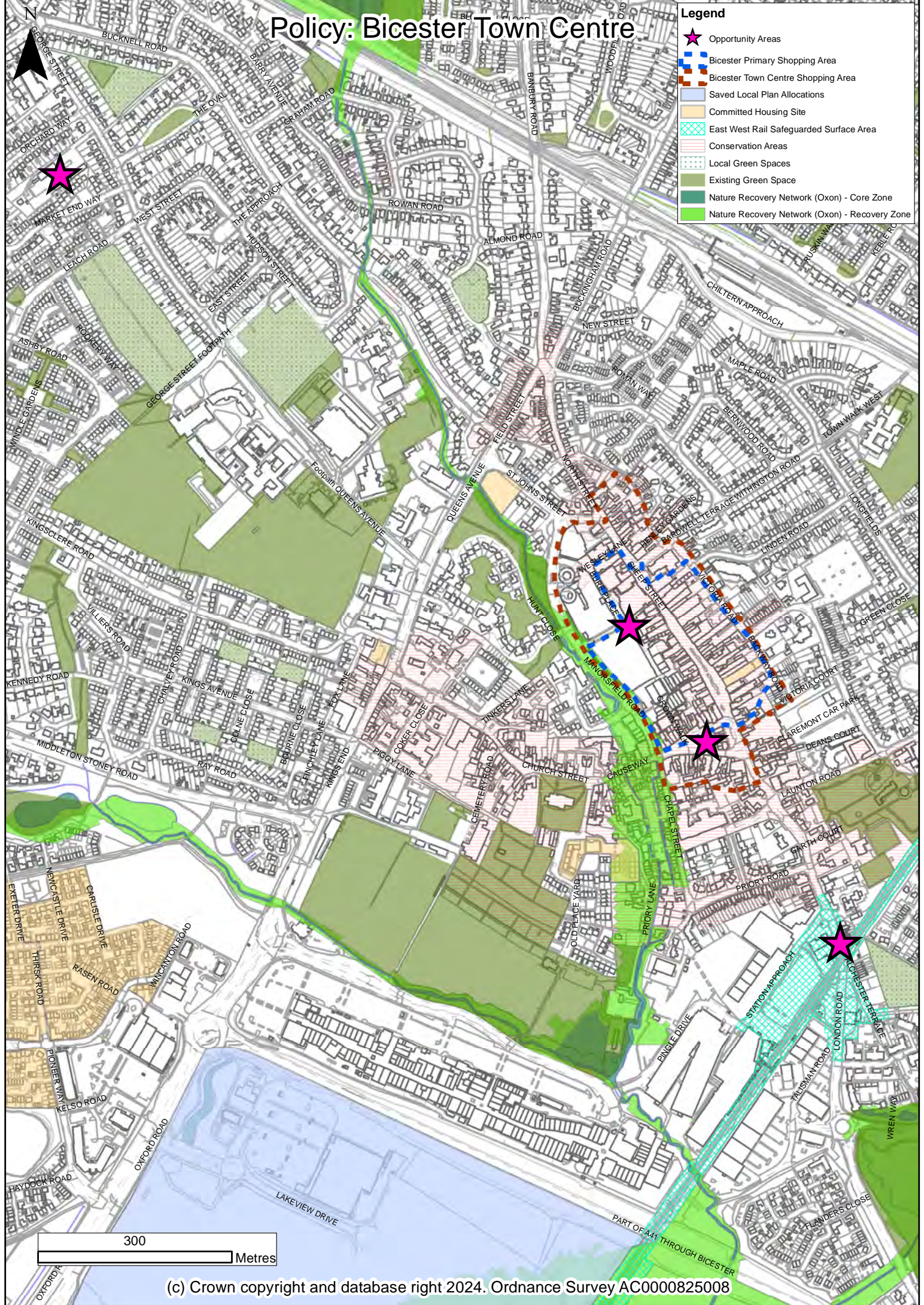


1,000
Metres

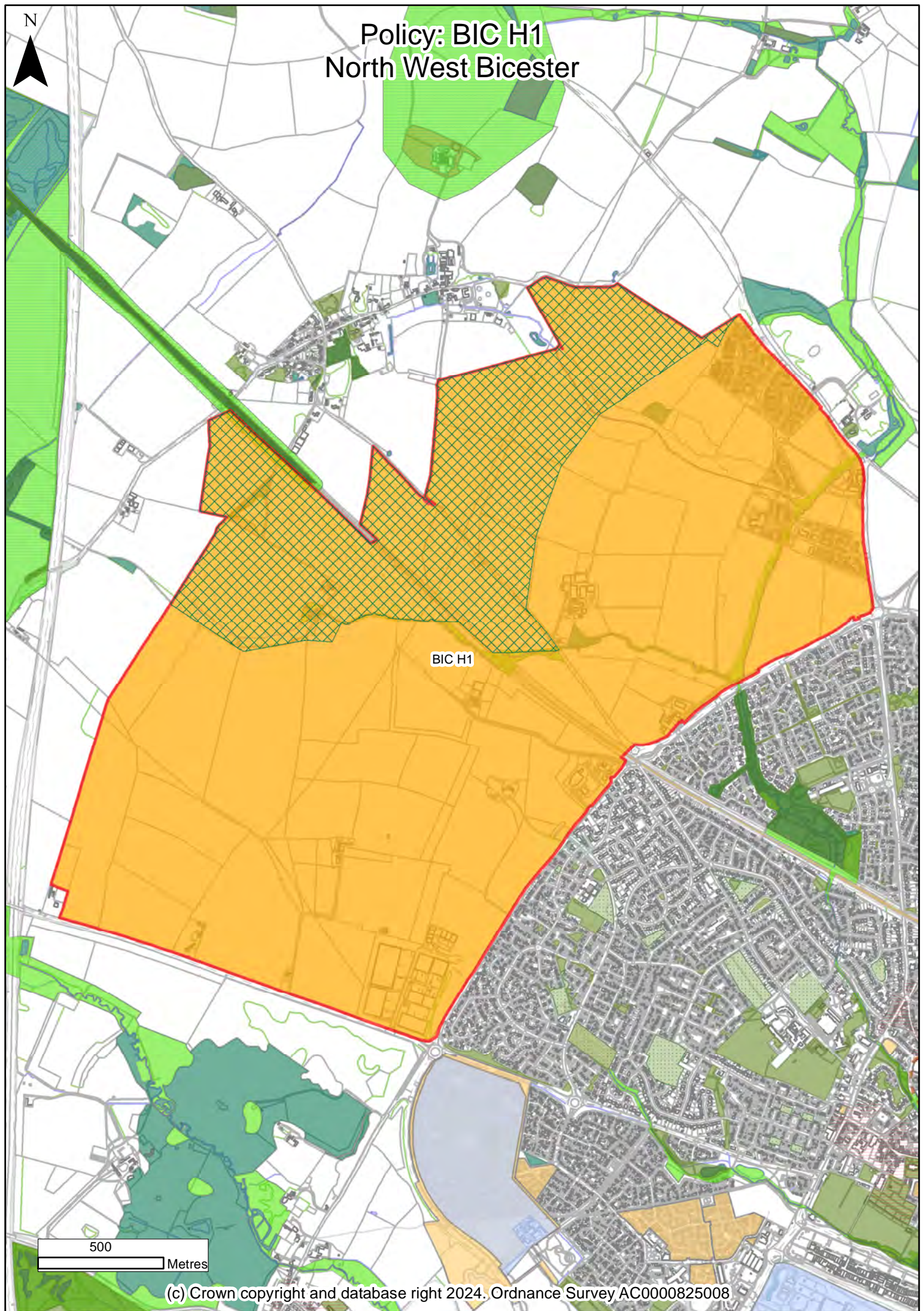
Policy: Bicester Town Centre

Legend

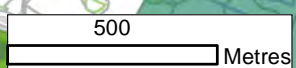
- ★ Opportunity Areas
- Bicester Primary Shopping Area
- Bicester Town Centre Shopping Area
- Saved Local Plan Allocations
- Committed Housing Site
- East West Rail Safeguarded Surface Area
- Conservation Areas
- Local Green Spaces
- Existing Green Space
- Nature Recovery Network (Oxon) - Core Zone
- Nature Recovery Network (Oxon) - Recovery Zone



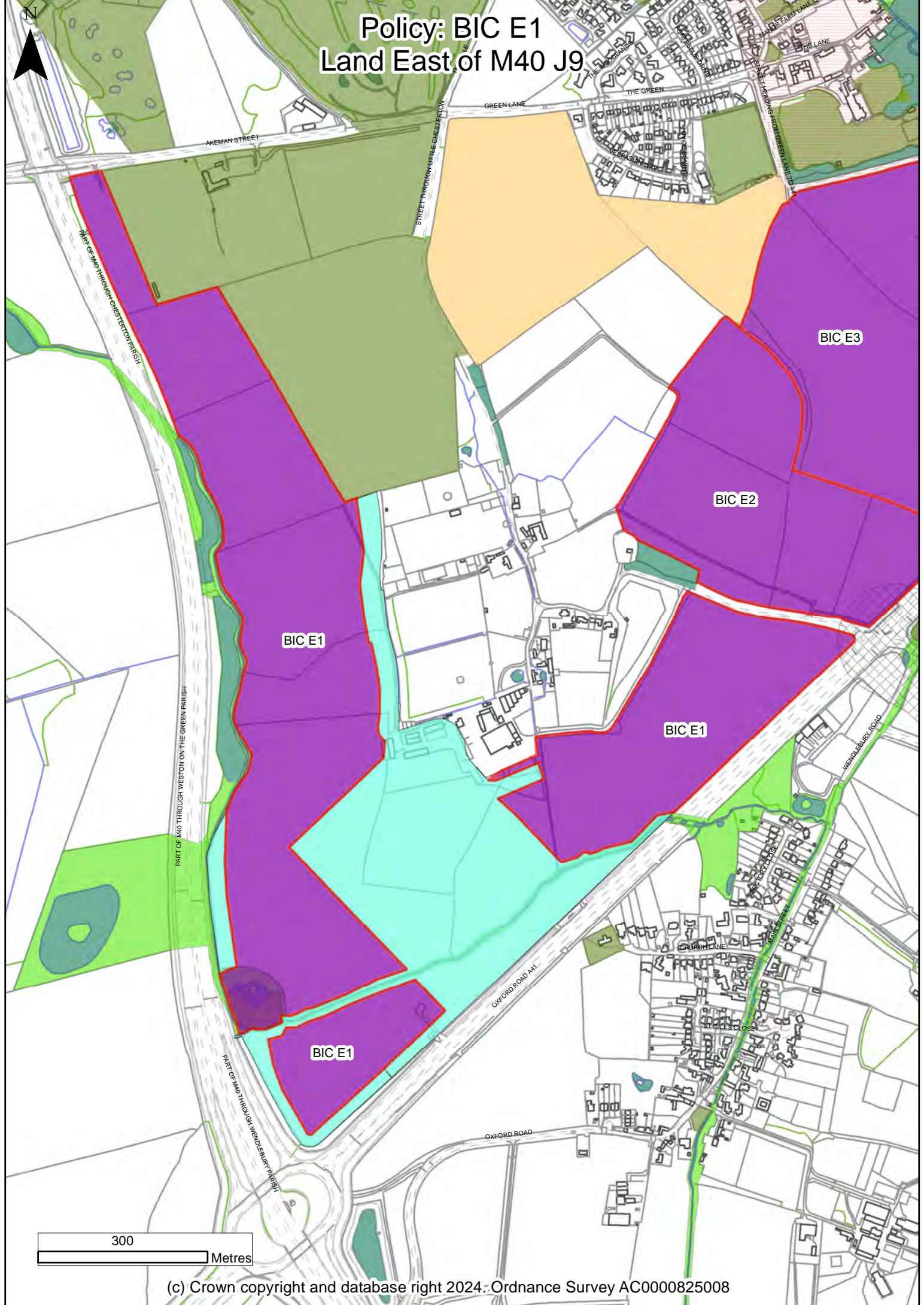
Policy: BIC H1 North West Bicester



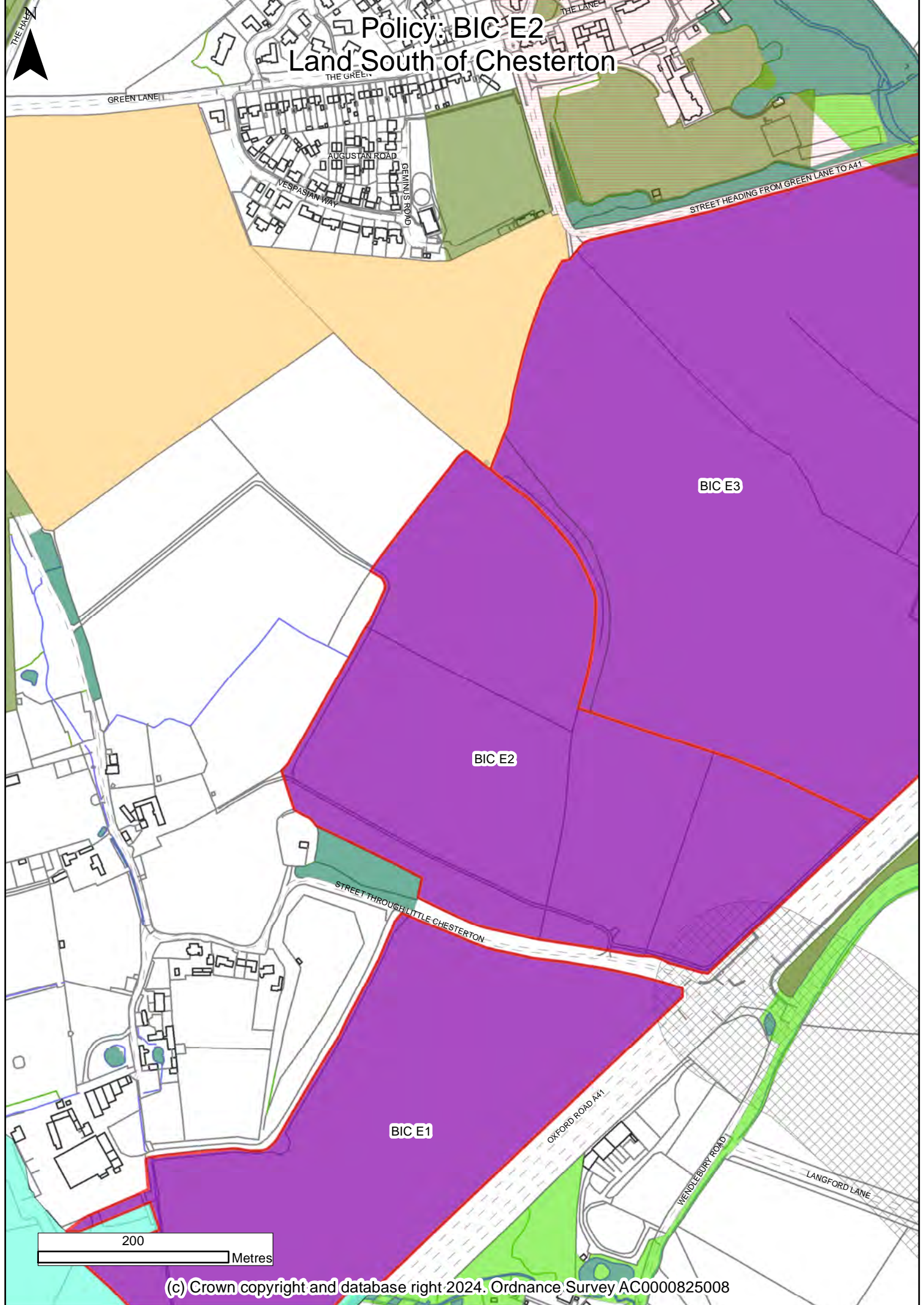
BIC H1



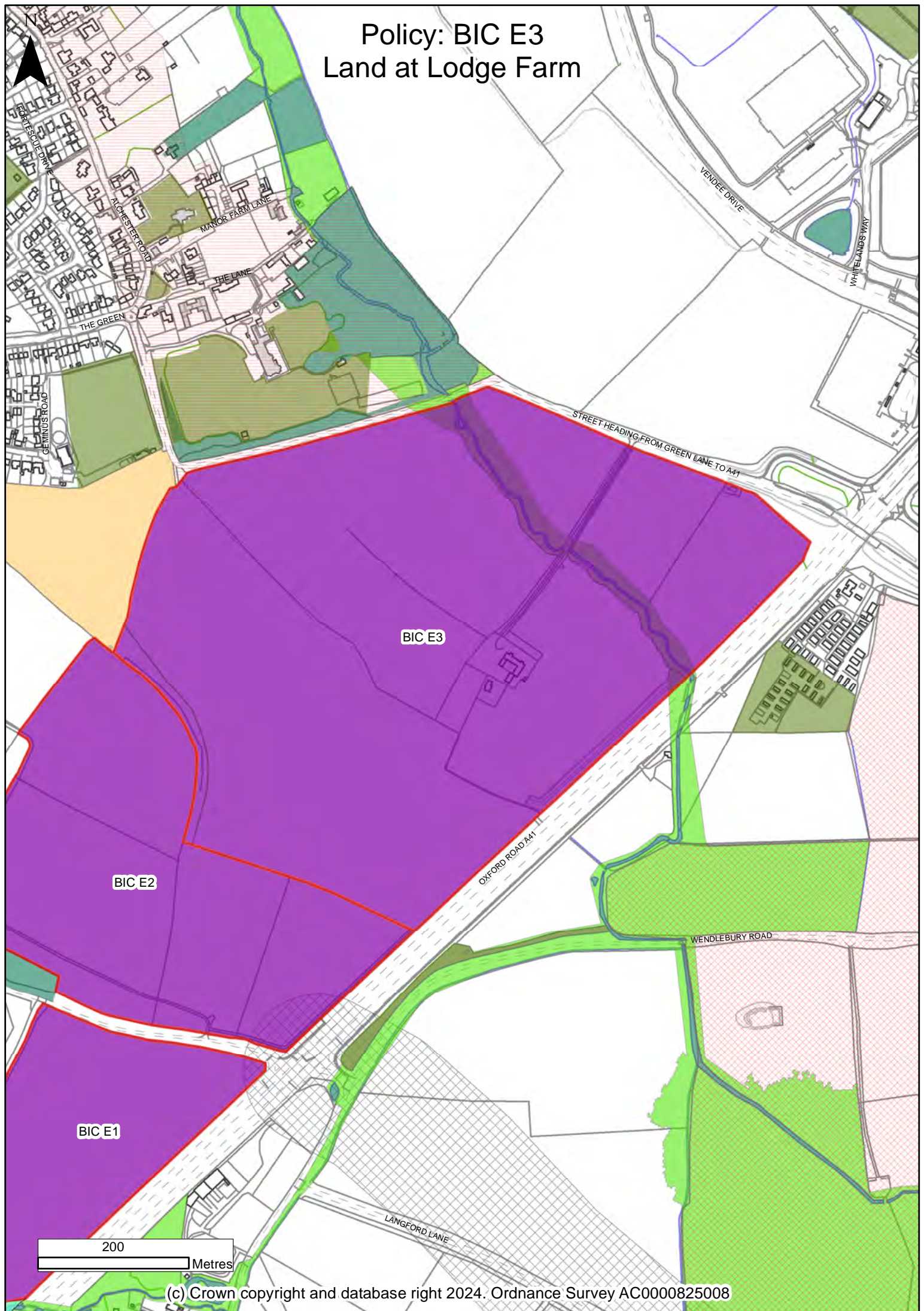
Policy: BIC E1 Land East of M40 J9



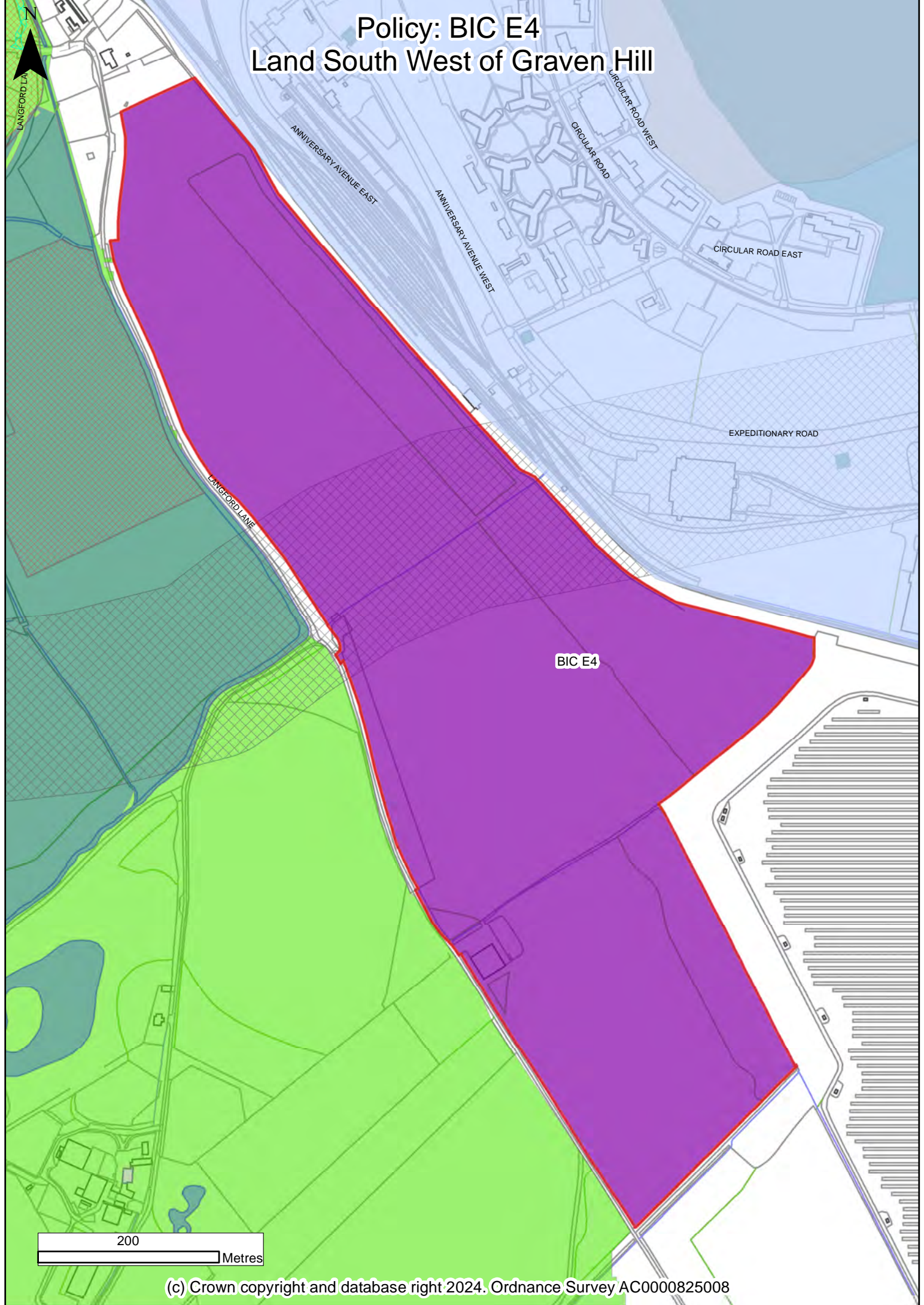
Policy: BIC E2 Land South of Chesterton



Policy: BIC E3 Land at Lodge Farm



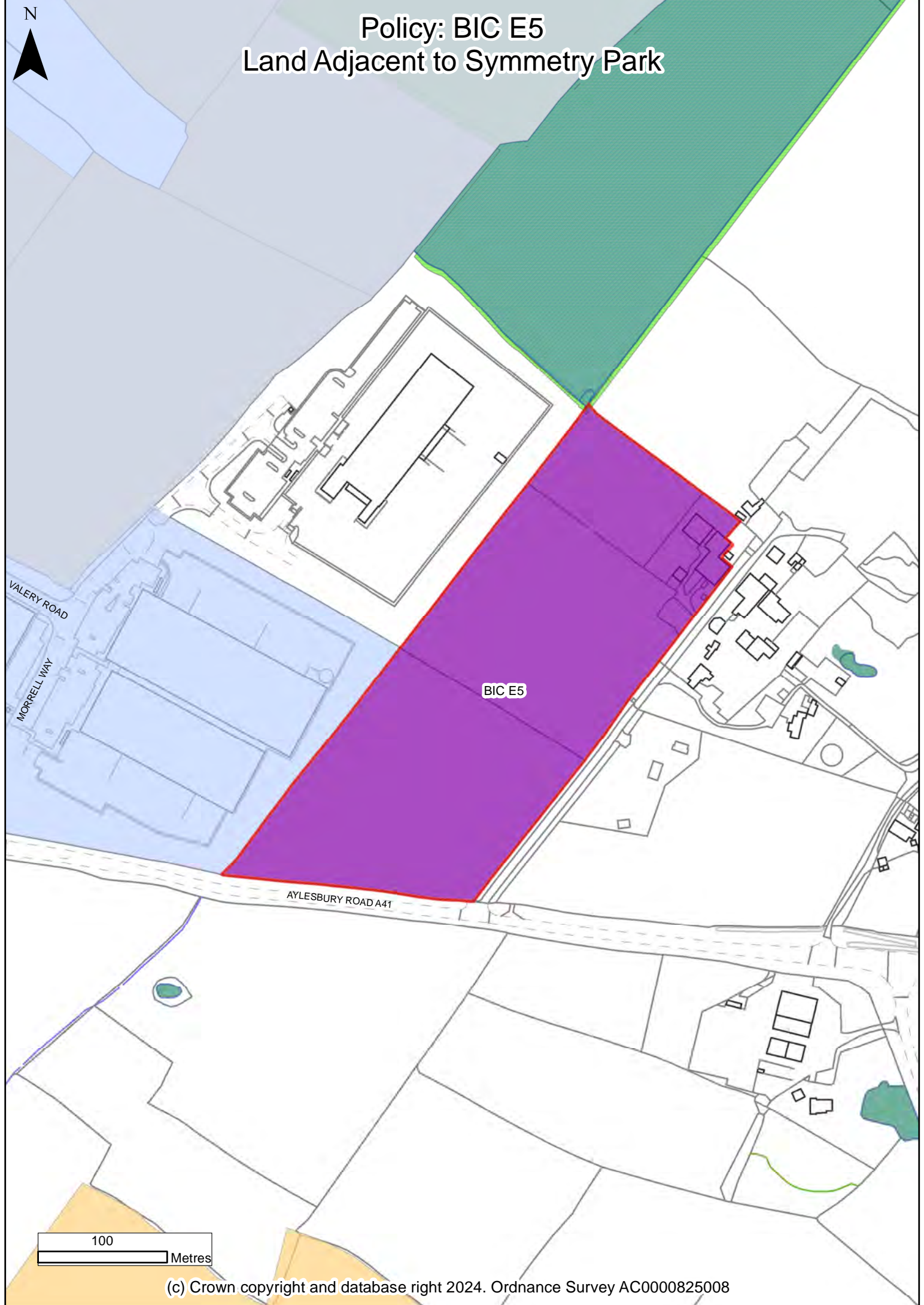
Policy: BIC E4 Land South West of Graven Hill



BIC E4

200 Metres

Policy: BIC E5 Land Adjacent to Symmetry Park



BIC E5

VALERY ROAD

MORRELL WAY


AYLESBURY ROAD A41

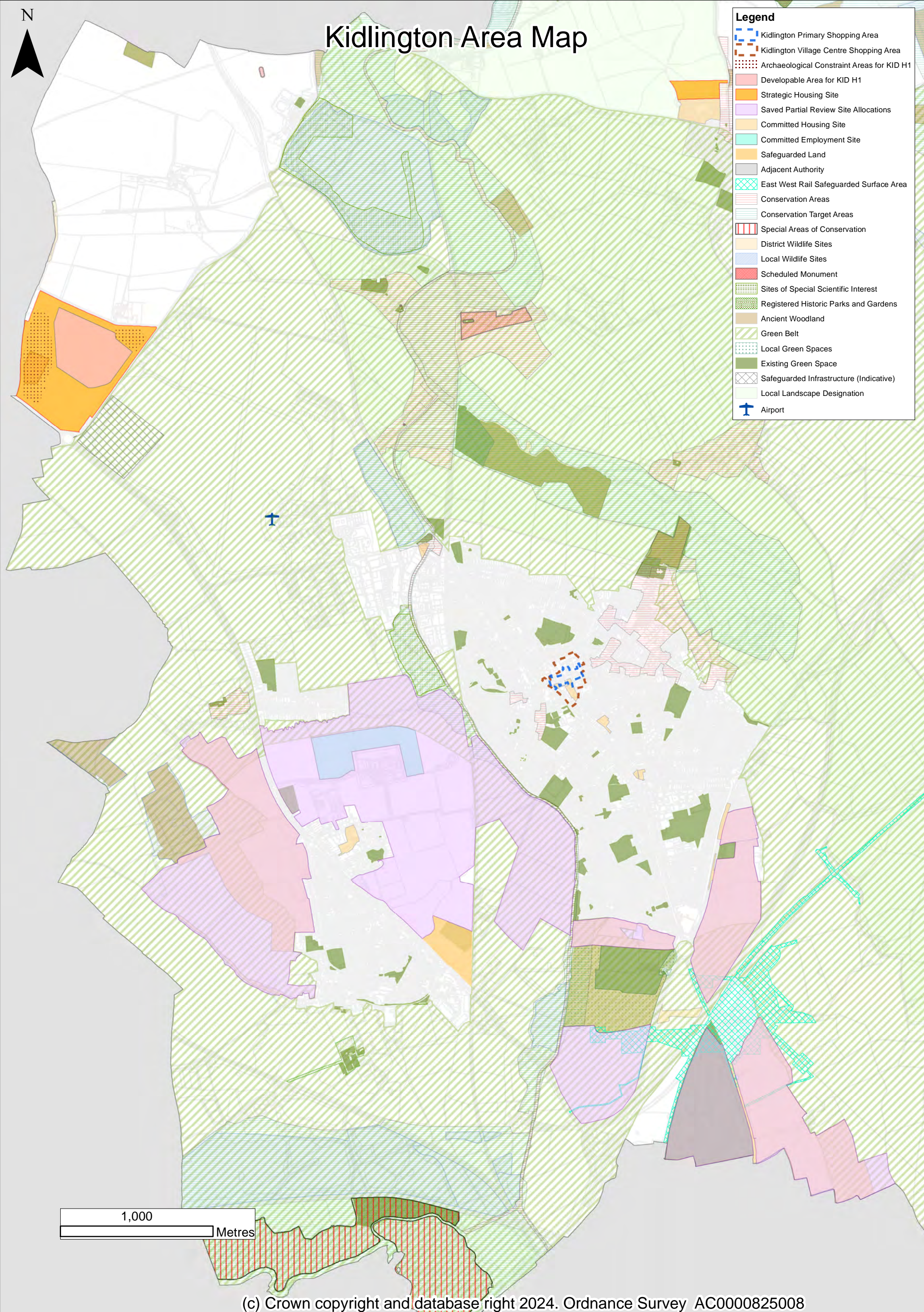
100 Metres

N



Kidlington Area Map

- Legend**
-  Kidlington Primary Shopping Area
 -  Kidlington Village Centre Shopping Area
 -  Archaeological Constraint Areas for KID H1
 -  Developable Area for KID H1
 -  Strategic Housing Site
 -  Saved Partial Review Site Allocations
 -  Committed Housing Site
 -  Committed Employment Site
 -  Safeguarded Land
 -  Adjacent Authority
 -  East West Rail Safeguarded Surface Area
 -  Conservation Areas
 -  Conservation Target Areas
 -  Special Areas of Conservation
 -  District Wildlife Sites
 -  Local Wildlife Sites
 -  Scheduled Monument
 -  Sites of Special Scientific Interest
 -  Registered Historic Parks and Gardens
 -  Ancient Woodland
 -  Green Belt
 -  Local Green Spaces
 -  Existing Green Space
 -  Safeguarded Infrastructure (Indicative)
 -  Local Landscape Designation
 -  Airport



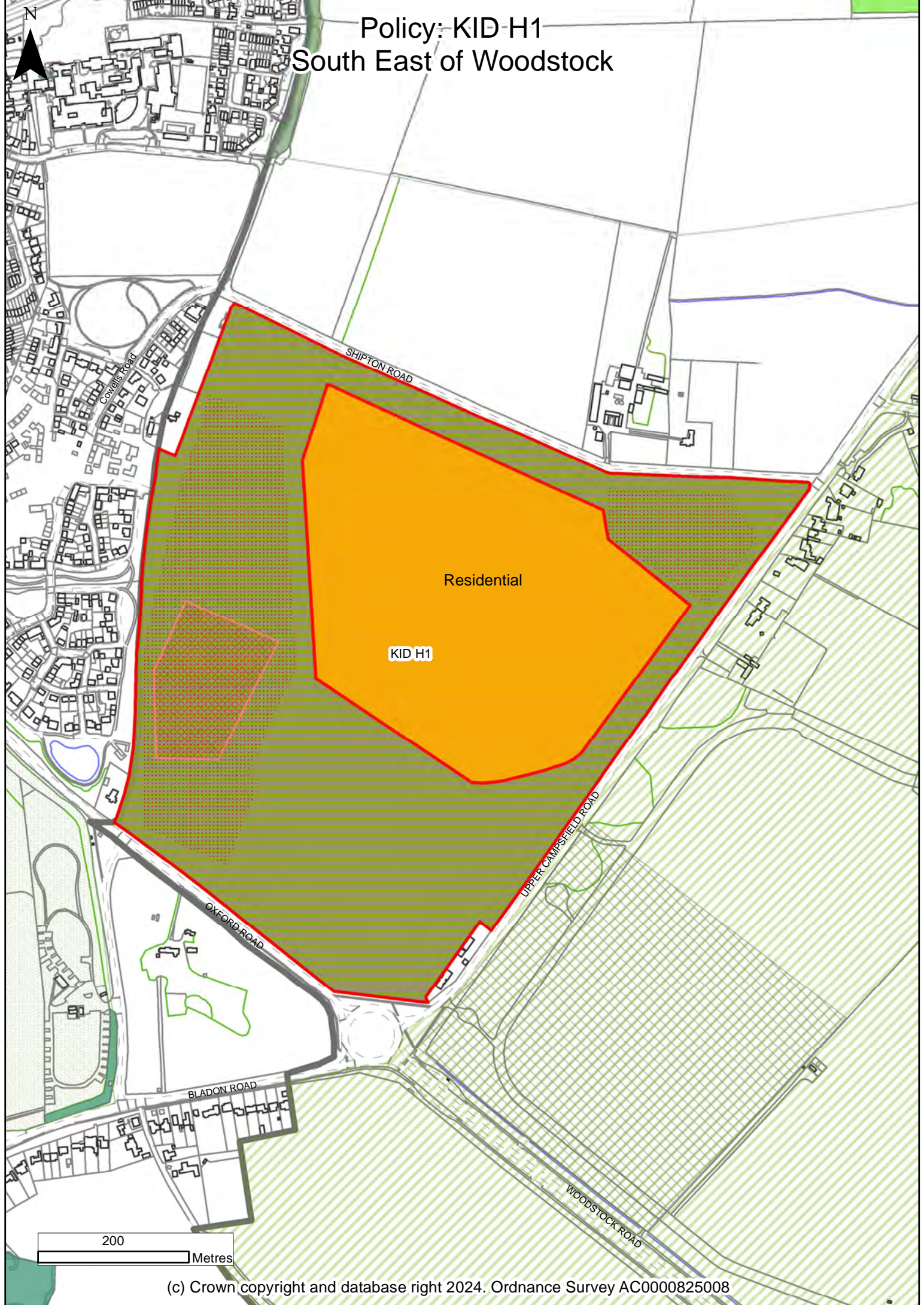
1,000 Metres

Policy: Kidlington Village Centre

- Legend**
- Kidlington Primary Shopping Area
 - Kidlington Village Centre Shopping Area
 - Committed Housing Site
 - Conservation Areas
 - Existing Green Space
 - Nature Recovery Network (Oxon) - Core Zone



Policy: KID-H1 South East of Woodstock



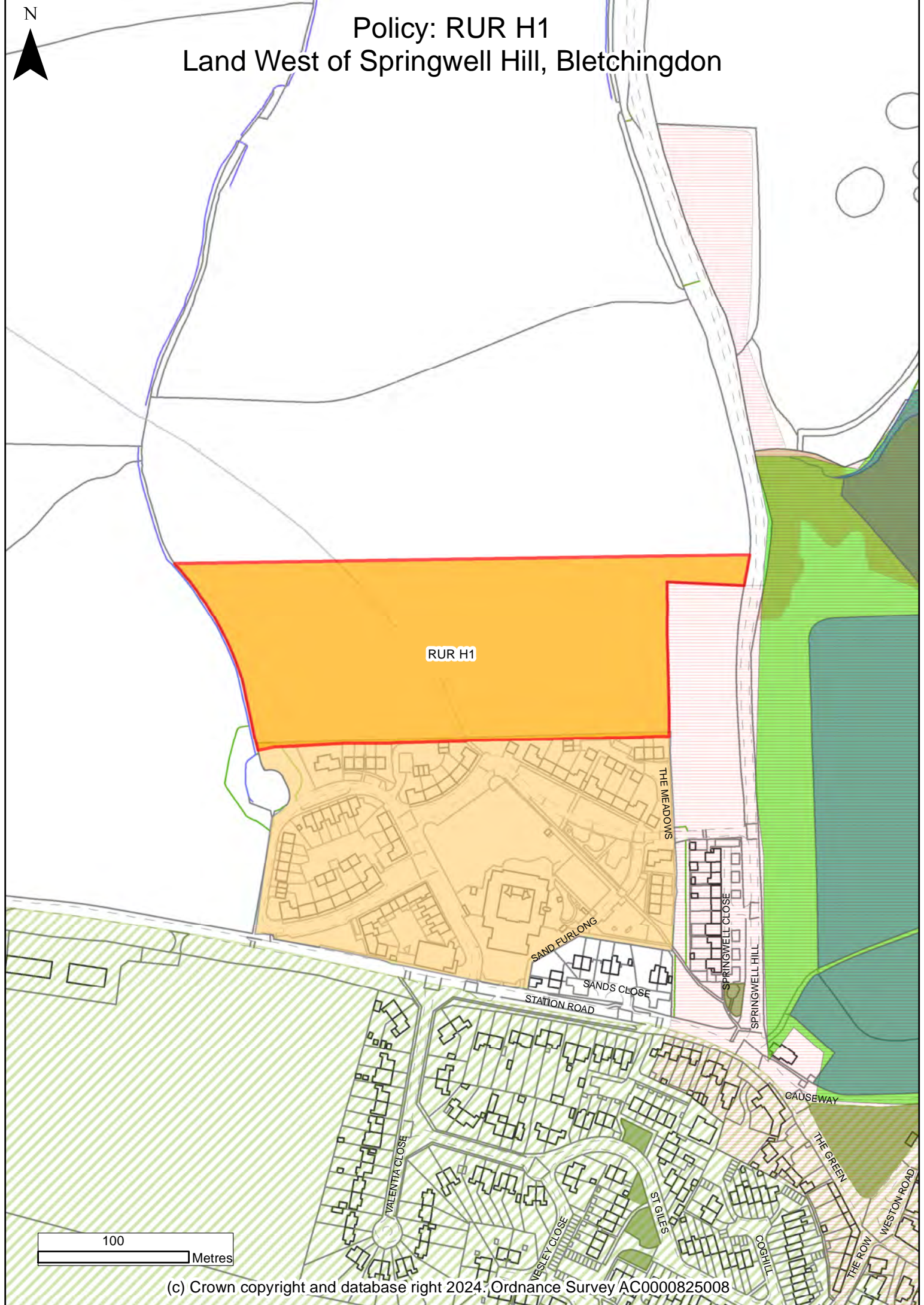
Residential

KID H1

200

Metres

Policy: RUR H1 Land West of Springwell Hill, Bletchington



RUR H1

100 Metres