

# Our Business plan priorities

## Housing that meets your needs

- Support the delivery of affordable and green housing.
- Ensure minimum standards in rented housing.
- Work with partners supporting new ways to prevent homelessness.
- Support our most vulnerable residents.
- Deliver the Local Plan.



## Supporting environmental sustainability

- Work towards our commitment to be carbon neutral by 2030.
- Promote the green economy.
- Support waste reduction, reuse and recycling.
- Work with partners to improve air quality.



## An enterprising economy with strong and vibrant local centres

- Support business retention and growth.
- Work with partners to support skills development and innovation.
- Work with others to support growth.
- Work with partners to promote the district as a visitor destination and attract investment in our town centres.
- Work with businesses to ensure compliance and promote best practice.



## Healthy, resilient and engaged communities

- Support and encourage active lifestyles and health and wellbeing.
- Support development of leisure services and facilities meeting the needs of residents.
- Support community and cultural development.
- Work towards our commitment to equalities, diversity and inclusion.
- Work with partners to address the causes of health inequality and deprivation.
- Work with partners to reduce crime and antisocial behaviour.



## Delivery themes

### Customers

Deliver high quality, accessible and convenient services that are right first time.



### Healthy places

Work collaboratively to create sustainable, thriving communities that support good lifestyle choices connecting us to each other and the natural environment.



### Partnerships

Work with partners across all sectors to deliver and improve services for our residents and communities.



### Continuous improvement

Make the best use of our resources and focus on improvement, innovation and staff development to maintain and enhance services.



### Including everyone

Our equalities, diversity and inclusion framework outlines how we plan to create an inclusive community and workplace in Cherwell, through fair and equitable services.



### Climate action

Support residents and local businesses to reduce their carbon emissions. Continue to transform our own estate to deliver our carbon neutral commitments.



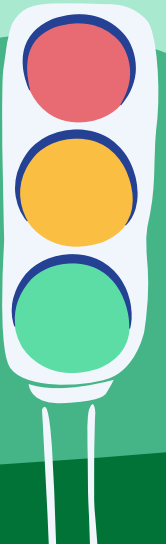
CO<sub>2</sub>

## Performance management framework

Cherwell District Council's performance management framework sets out the key actions, projects and programmes of work that contribute to the delivery of the 2023 business plan and the priorities of the council. The supporting measures and key performance indicators are reported on a monthly basis to highlight progress, identify areas of good performance and actions that have been taken to address underperformance or delay.

To measure performance a 'traffic light' system is used. Where performance is on or ahead of target, it is rated green. Where performance is slightly behind the target it is rated amber. A red rating indicates performance is off target.

The monthly performance cycle also includes the management and reporting of leadership risk and financial information. This provides an overview of the council's progress against its strategic priorities and delivery themes as set out earlier in this business plan.



# Annual Service Delivery Plan

Our Annual Delivery Plan which sets out the clear priorities and objectives for the year, it establishes a clear direction for our Council on an annual basis in support of the vision, aims and ambitions of our Council as contained in the Council's Business Plan. As this is our Council's initial Annual Delivery Plan, introduced during 2022/23, it is therefore intended to cover the period 2022/23 and 2023/24. The Annual Delivery Plan contains ten key Strategic Priorities which are identified in table below.

<b>Response to the Cost of Living Crisis</b>	To respond to the rising cost of living challenges within our local communities, ensuring we co-ordinate our services and our partnerships to provide the most effective support to our communities.
<b>Response to the Climate Emergency</b>	The Council declared a climate emergency in 2019 this Council and many others recognised the importance of tackling the impending global ecological disaster by unanimously passing a climate emergency motion and has in place an action plan to reduce the Council's direct impact on the environment. The Council has recently agreed to take forward a new strategy which will be developed with support from Members across the Council and through the contribution of the Overview & Scrutiny Committee.
<b>Promote individual Well Being &amp; Healthy Communities</b>	To support the well-being of our communities and develop a single strategy for physical, mental, social and cultural support promoting inclusion for all.
<b>Support and facilitate a Vibrant local Economy</b>	To ensure we have a clear strategy for the economic prosperity of Bicester, Banbury, Kidlington and our rural villages and communities including specific opportunities to regenerate and improve our Town Centres.
<b>Right homes, Right places - Local Plan</b>	To ensure we have the right target for new homes and economic growth, in the right place, and protect our villages, communities and the environment through our Local Plan.
<b>Work to prevent Homelessness</b>	To support our residents into permanent accommodation that meets their needs and supports their forward journey in society.
<b>Deliver in Partnership</b>	To recognise the importance of working in partnership for our local communities. We will seek to strengthen our Local Strategic Partnership in Cherwell to help achieve improved outcomes for all our communities through improved co-ordination of our priorities with our LSP partners.
<b>Deliver for and with our communities</b>	Deliver effective and efficient services to meet the needs of our local communities now and into the future.
<b>Medium Term Financial sustainability</b>	To ensure the MTFs is balanced over the medium term and we provide value for money with our limited resources focused on the Council's key priorities and maximise external investment into Cherwell.
<b>Team Cherwell</b>	To ensure the support and development of our organisation, through our staff, to support the aims and ambitions of our Council.