

# Cherwell District Summary 2020

Published July 2020

# Introduction to the District Summary for Cherwell

This is a summary report for Cherwell District and includes the following key areas highlighted in the JSNA 2020 Oxfordshire report:

- Historical and projected population change
- Public Health England 2020 health summary
- Key health and wellbeing facts and figures 2020
- A district inequalities summary (tartan rug)
- Indices of Multiple Deprivation 2019

Other resources include:

[JSNA 2020 Oxfordshire report](#)

[Public Health Dashboards](#)

[Health Needs Assessments](#)

[Community Health and Wellbeing Profiles](#)

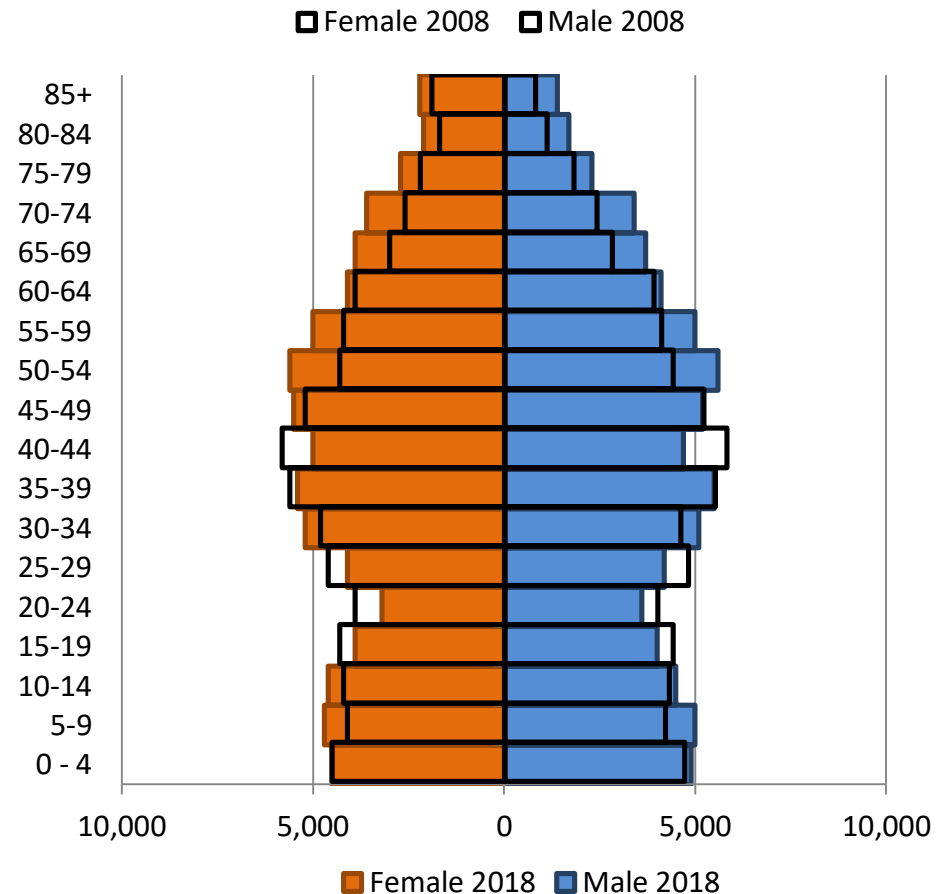
[JSNA Bitesize](#)

EMAIL: [JSNA@Oxfordshire.gov.uk](mailto:JSNA@Oxfordshire.gov.uk)  
WEB: [insight.oxfordshire.gov.uk/jsna](https://insight.oxfordshire.gov.uk/jsna)

## Cherwell District Population

- In mid-2018 there were 149,200 residents in the Cherwell district.
- There were 3,600 people aged 85+ in the Cherwell district.
- Between 2008 and 2018 the population increased by +7%, just below Oxfordshire (+8%) and England (+8%).
- The population pyramid shows females and males by 5-year age and an increase in the number of young people aged 5-9, working age people aged 30-34 and in older people aged 45 to 59 and 65+.

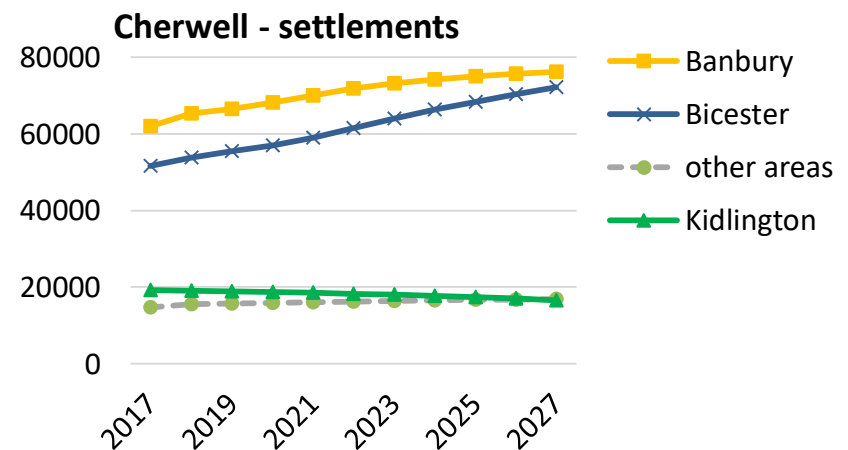
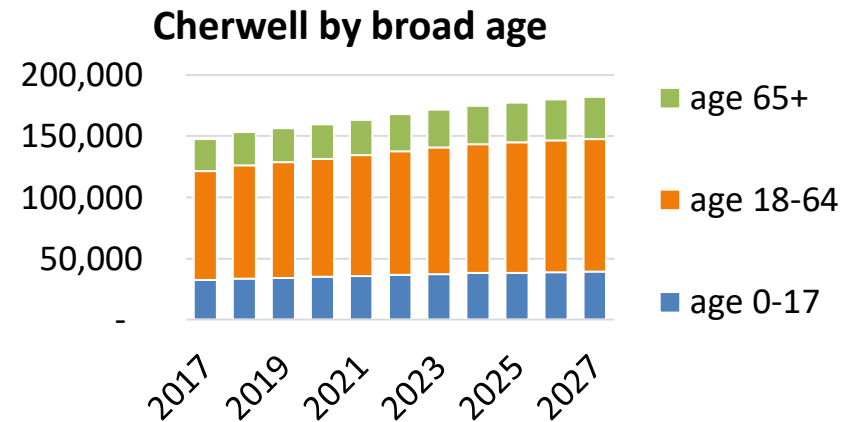
### Historical population change 2008 to 2018



# Cherwell District Population Forecast

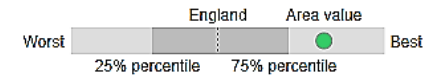
The housing-led forecasts show the population of Cherwell increasing from 147,600 in 2017 to 181,900 by 2027 (+34,300, +23%). There are expected to be significant increases in the populations of the Banbury area and the Bicester area with major developments south of Salt Way and at Bankside in Banbury and at Graven Hill and sites in south east and south west Bicester.

- The population of Banbury and the surrounding area is expected to grow from 62,000 to 76,200 (+23%).
- The population of Bicester and the surrounding area is expected to grow from 51,700 to 70,400 (+40%).
- Kidlington is expected to see a slight decline as there is limited housing growth predicted.



# Health Summary for Cherwell District

Area: Cherwell



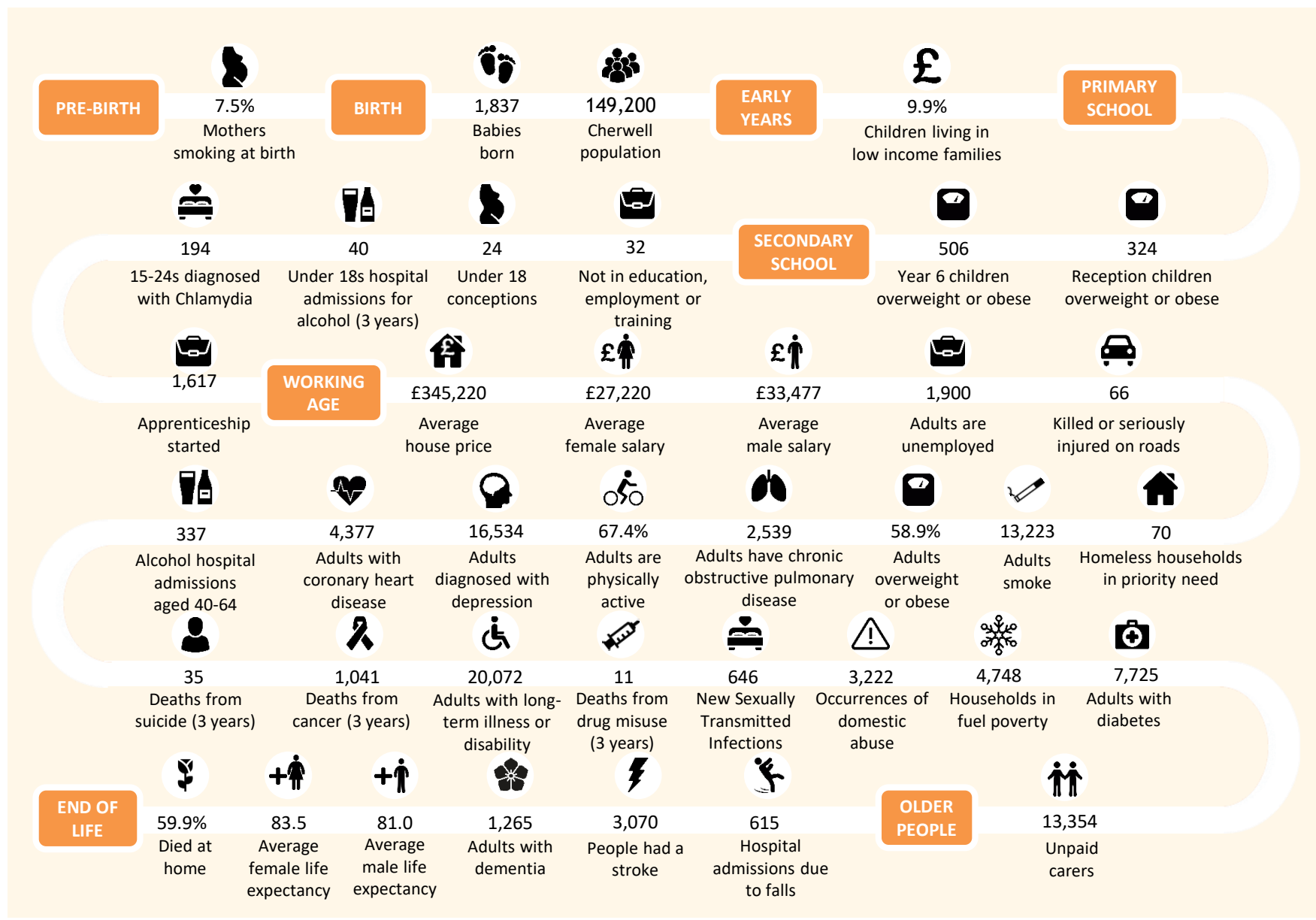
● Significantly better / England ● Not significantly different ● Significantly worse / England

- The Public Health England local health profile for Cherwell shows that more than half of the indicators are **similar** or **better** than the national average.
- Indicators that are **worse** than average are: Emergency admissions in under 5s, admissions for injuries under 5, under 15 and in 15-25 years olds.

Indicators	Selection Value	England Value	England Worst	Spine chart	England Best
Life expectancy at birth for males, 2013-2017 (years)	80.4	79.5	74.4	●	88.8
Life expectancy at birth for females, 2013-2017 (years)	83.5	83.1	79.6	●	90.7
Low birth weight of term babies (%)	2.6	2.8	4.5	●	0.0
Emergency admissions in under 5s (Crude rate per 1000)	155.0	149.2	289.9	●	60.5
A and E attendances in under 5s (Crude rate per 1000)	374.2	551.6	1,761.7	●	147.6
Admissions for injuries in under 5s (Crude rate per 10,000)	162.0	138.8	279.9	●	0.0
Admissions for injuries in under 15s (Crude rate/100,000 aged 0-17)	118.8	110.1	185.4	●	59.0
Admissions for injuries in 15 to 24 year olds (Crude rate per 10,000)	158.9	137.0	280.0	●	64.2
Children with excess weight, Reception Year (%)	20.2	22.4	30.5	●	14.4
Obese Children, Reception Year (%)	7.7	9.5	13.6	●	4.0
Children with excess weight, Year 6 (%)	31.6	34.2	43.9	●	21.6
Obese Children, Year 6 (%)	18.4	20.0	29.1	●	10.3
Hospital stays for self harm (SAR)	98.1	100.0	309.0	●	26.5
Hospital stays for alcohol related harm (Narrow definition) (SAR)	81.6	100.0	183.6	●	60.7
Hospital stays for alcohol related harm (Broad definition) (SAR)	81.2	100.0	165.0	●	60.4
Deaths from all causes, all ages (SMR)	96.8	100.0	133.2	●	52.3
Deaths from all causes, under 75 years (SMR)	89.0	100.0	160.9	●	65.7
Deaths from all cancer, all ages (SMR)	96.2	100.0	130.1	●	52.6
Deaths from all cancer, under 75 years (SMR)	95.4	100.0	140.1	●	66.8
Deaths from circulatory disease, all ages (SMR)	86.6	100.0	142.0	●	57.7
Deaths from circulatory disease, under 75 years (SMR)	77.9	100.0	180.1	●	53.9
Deaths from coronary heart disease, all ages (SMR)	84.1	100.0	165.7	●	56.9
Deaths from stroke, all ages, all persons (SMR)	88.8	100.0	160.6	●	32.8
Deaths from respiratory diseases, all ages, all persons (SMR)	94.0	100.0	157.9	●	41.8
Deaths from causes considered preventable (SMR)	87.1	100.0	168.3	●	65.2

Source: [Public Health England: Local Health](#)

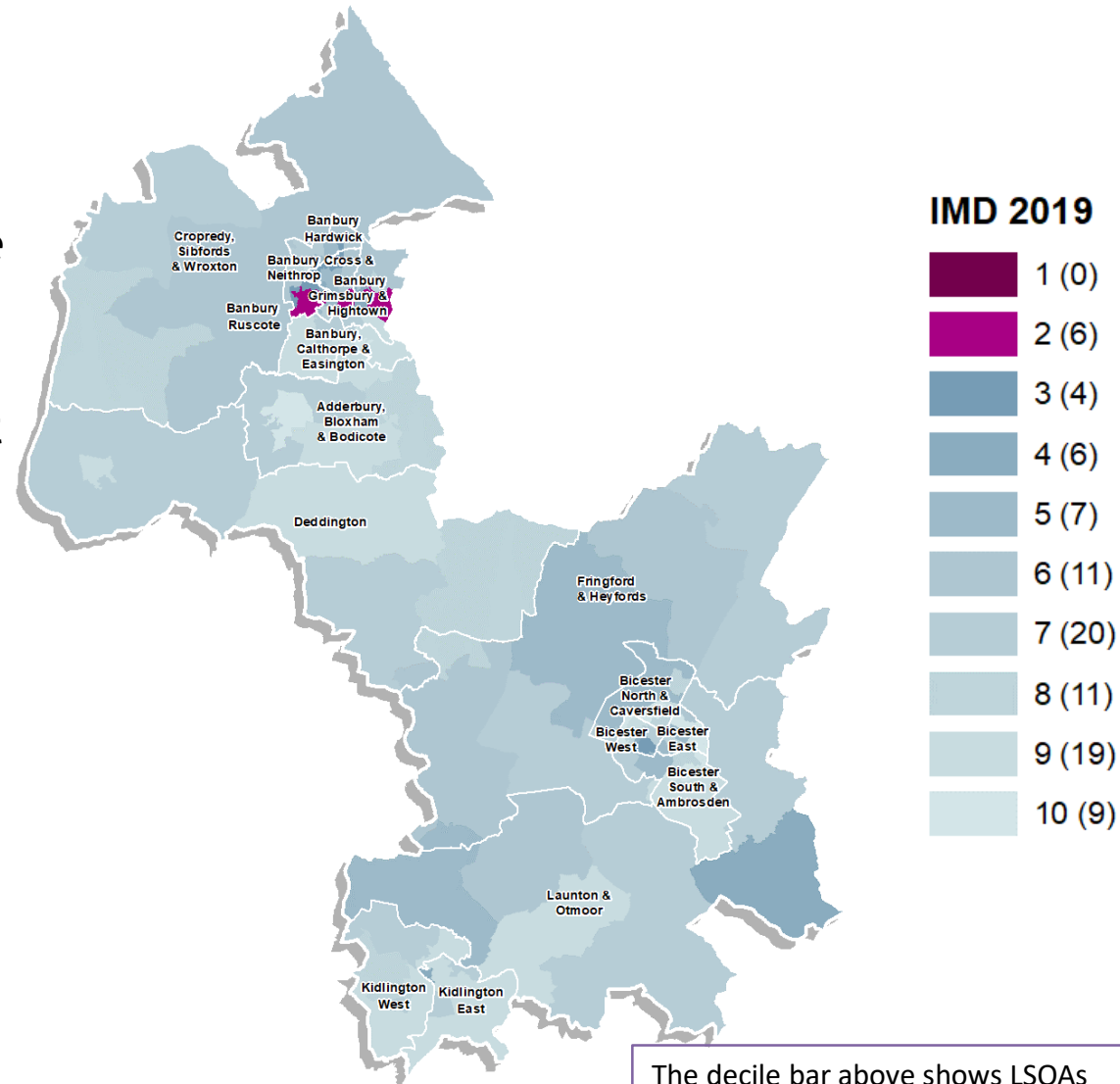
# Cherwell District 2019 health and wellbeing facts and figures 2019





## Index of Multiple Deprivation 2019 at national level

- Compared with the IMD 2015, Cherwell has moved down 29 places and it is now ranked 220 out of 317 local authorities where 1 is most deprived and 317 is least deprived.
- The map shows that the 20% most deprived LSOAs (Lower Layer Super Output Areas) are located in parts of Banbury Cross & Neithrop, Banbury Grimsbury & Hightown and Banbury Ruscote.
- The amount of LSOAs amongst the 20% most deprived areas in Cherwell have increased from 4 in 2015 to 6 in 2019 which means that overall Cherwell is relatively more deprived.

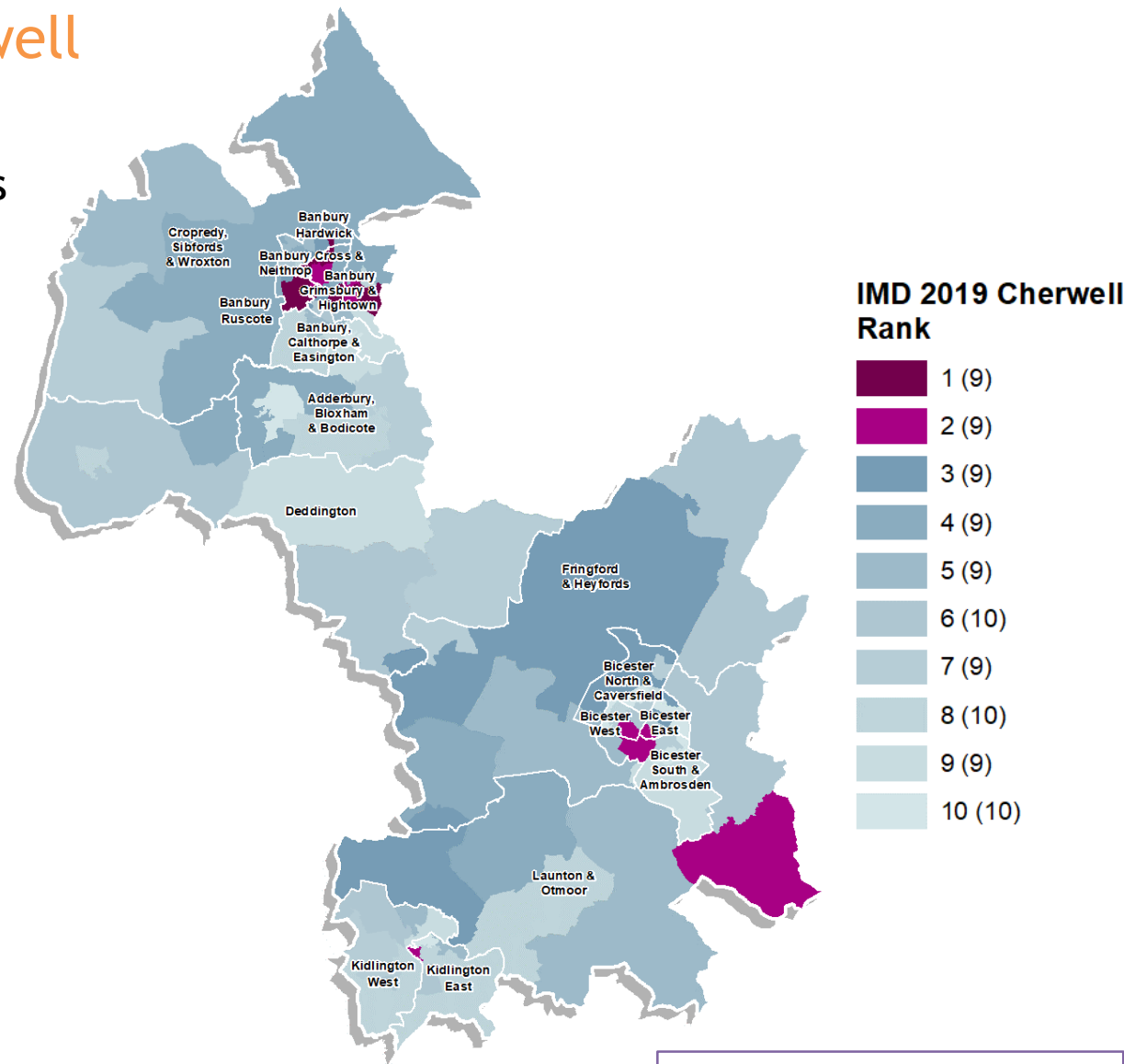


The decile bar above shows LSOAs grouped according to how deprived they are, where **1 is most deprived** and **10 is least deprived**.



## IMD Ranking within Cherwell

- This map shows how the LSOAs within Cherwell compare to each other.
- Areas that score within the 10% most deprived within Cherwell are in parts of Banbury Cross & Neithrop, Banbury Grimsby & Hightown and Banbury Ruscote.
- Parts of Banbury Cross & Neithrop, Banbury Ruscote, Bicester South & Ambrosden, Bicester West, Kidlington East, and Launton & Otmoor are within the 20% most deprived areas in Cherwell.



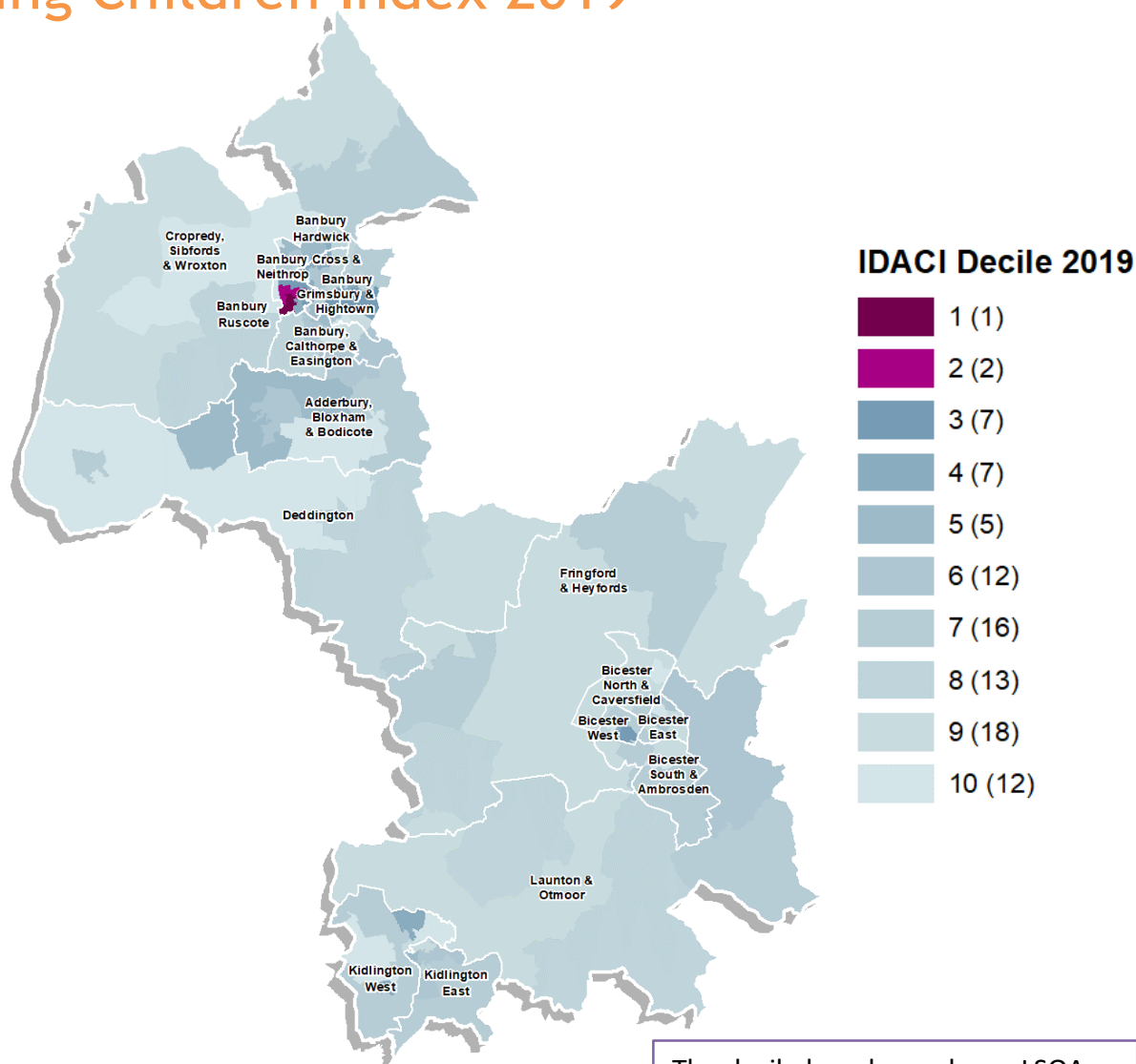
Source: [Indices of Multiple Deprivation 2019](#)  
 Mapped by District Data Analysis service

**EXPLORE** the data for districts and small areas with our [interactive deprivation dashboard](#)

The decile bar above shows LSOAs grouped according to how deprived they are, where **1 is most deprived** and **10 is least deprived**.

## Income Deprivation Affecting Children Index 2019

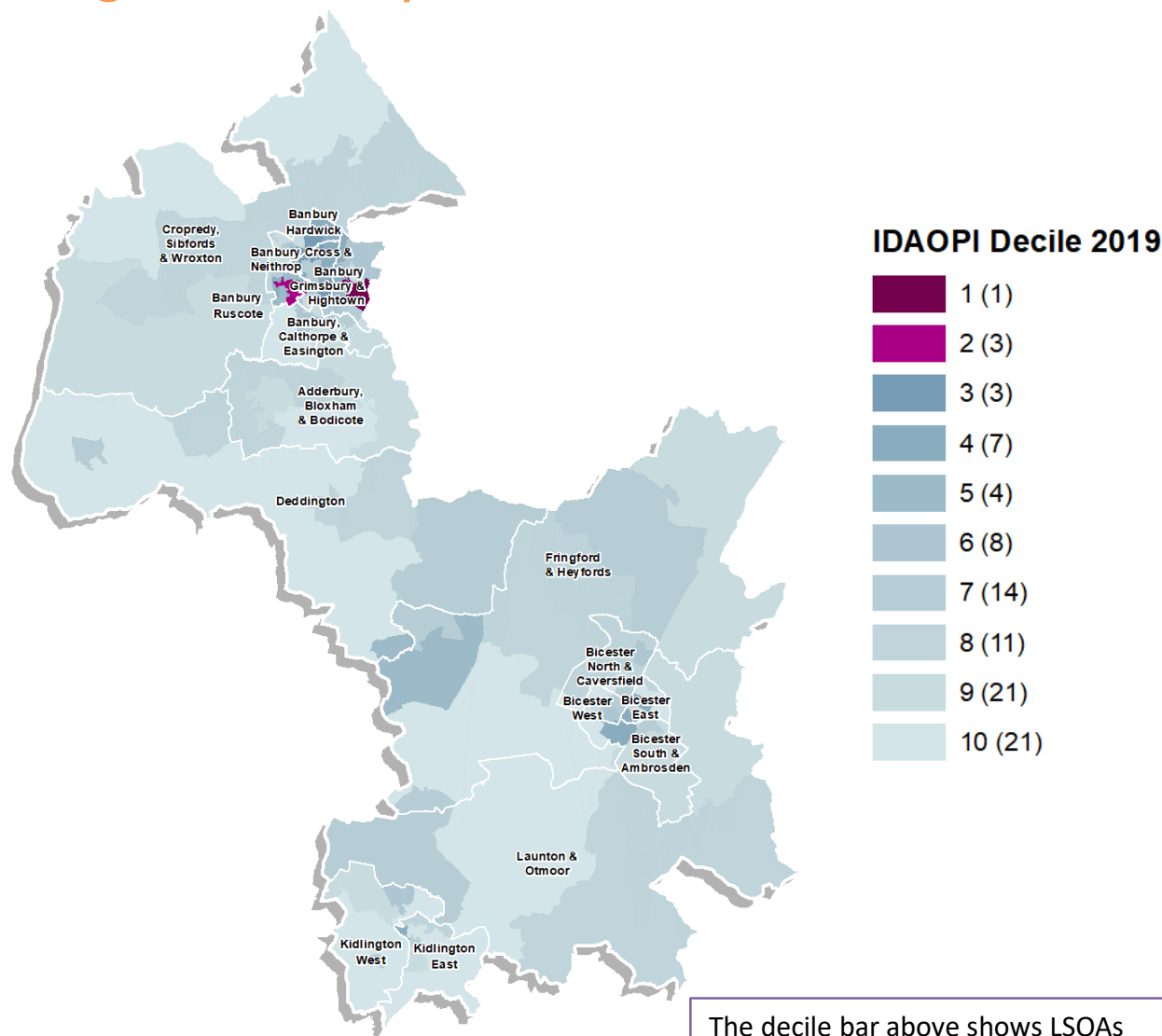
- The Income Deprivation Affecting Children Index (IDACI) is the proportion of children age 0-15 living in income deprived families.
- The most deprived areas on the IDACI in Cherwell were in parts of Banbury Ruscote and both are within 10% and 20% most deprived LSOAs in the country.
- The least deprived areas are located in parts of Adderbury, Bloxham and Bodicote, Cropredy, Sibfords & Wroxton, and Deddington are all within the 10% least deprived LSOAs.



The decile bar above shows LSOAs grouped according to how deprived they are, where **1 is most deprived** and **10 is least deprived**.

# Income Deprivation Affecting Older People Index 2019

- The Income Deprivation Affecting Older People Index (IDAOPPI) is the proportion of those age 60 or over who experience income deprivation.
- The most deprived areas on the IDAOPPI in Cherwell are in parts of Banbury Grimsbury & Hightown in the 10% most deprived areas and Banbury Ruscote and Banbury Cross & Neithrop in the 20% most deprived areas.
- The least deprived areas are in parts of Deddington, Fringford & Heyfords and Bicester West are amongst the 10% least deprived LSOAs.



Sources: [Indices of Multiple Deprivation 2019 Explorer](#) / [Joint Strategic Needs Assessment 2020](#)

**EXPLORE** the data for districts and small areas with our [interactive deprivation dashboard](#)

The decile bar above shows LSOAs grouped according to how deprived they are, where **1 is most deprived** and **10 is least deprived**.

## Finding out more

The latest JSNA giving health and wellbeing facts and figures for Oxfordshire is available on [Oxfordshire Insight](#)

[Oxfordshire 2020 JSNA report](#)

[ANNEX: Inequalities indicators ward level data](#)

[Ward inequalities indicators excel pack including OCCG and District summaries](#)

[Public Health Dashboards](#)

[Health Needs Assessments](#)

[Community Health and Wellbeing Profiles](#)

Public Health England provides a wide range of health indicators and profiles on [Fingertips](#)

ONS population estimates and population projections for county and districts, benefits claimants and the annual population survey are available from [www.nomisweb.co.uk](http://www.nomisweb.co.uk)

Oxfordshire County Council population forecasts are published on Oxfordshire Insight (select “future population change”)  
<http://insight.oxfordshire.gov.uk/cms/population-0>