

# Raising Achievement

## Cherwell District Council

Monday 18th October 2010

Working for you



# Northern Team

- Integrated area team based in Banbury, although also work in other areas according to need
- Area Trust Board
- Greater emphasis on what the data tells us on an area basis as opposed to the County
- Reallocated resources to preventative work and invested in increasing front line capacity so we can respond quickly

Working for you



## CYP&F Priorities 2010-13

- Keeping All Children and Young People Safe
- Raising Achievement for All Children and Young People
- Narrowing the gap for children and young people from our most disadvantaged and vulnerable groups

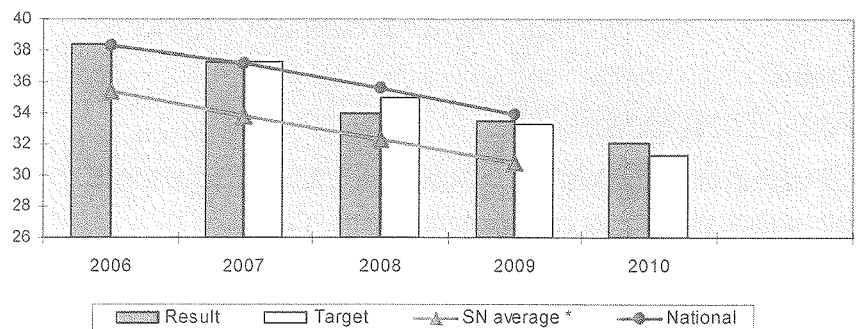
Working for you

OXFORDSHIRE  
COUNTY COUNCIL  
www.oxfordshire.gov.uk

3

## Early Years Foundation Stage

NI 92 - EYFS Narrowing the Gap

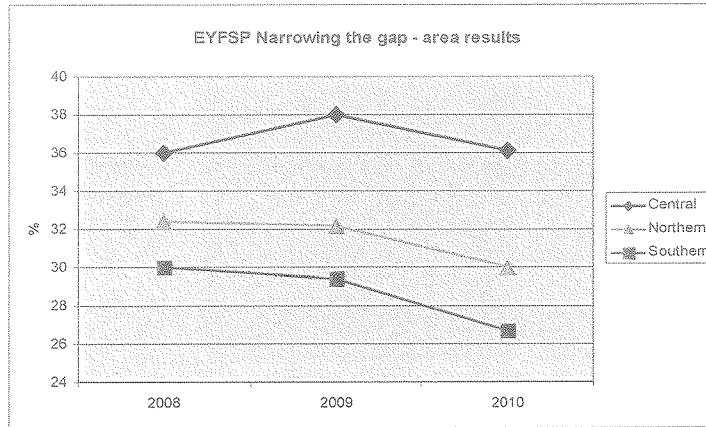


Working for you

OXFORDSHIRE  
COUNTY COUNCIL  
www.oxfordshire.gov.uk

4

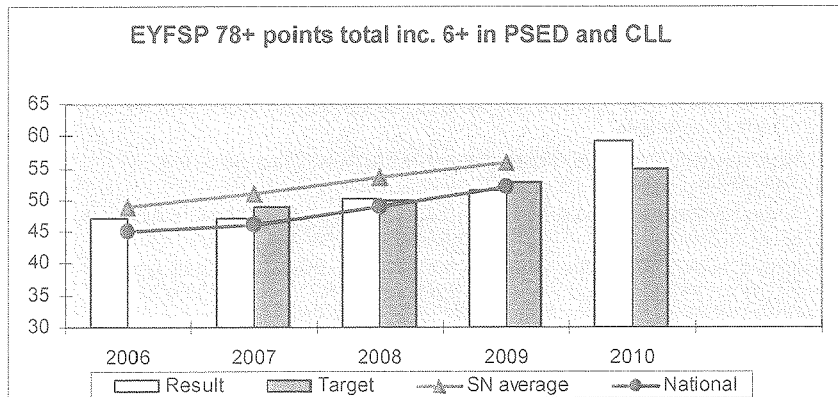
# Early Years Foundation Stage



Working for you

**OXFORDSHIRE COUNTY COUNCIL**  
www.oxfordshire.gov.uk

# Early Years Foundation Stage

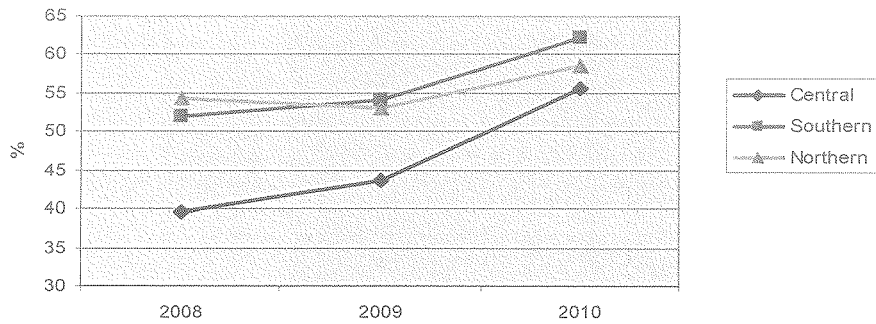


Working for you

**OXFORDSHIRE COUNTY COUNCIL**  
www.oxfordshire.gov.uk

## Early Years Foundation Stage

% NI 72 EYFSP 78+ pts incl 6+ PSED and CLL by area



Working for you

OXFORDSHIRE  
COUNTY COUNCIL  
www.oxfordshire.gov.uk

## Early Years Foundation Stage

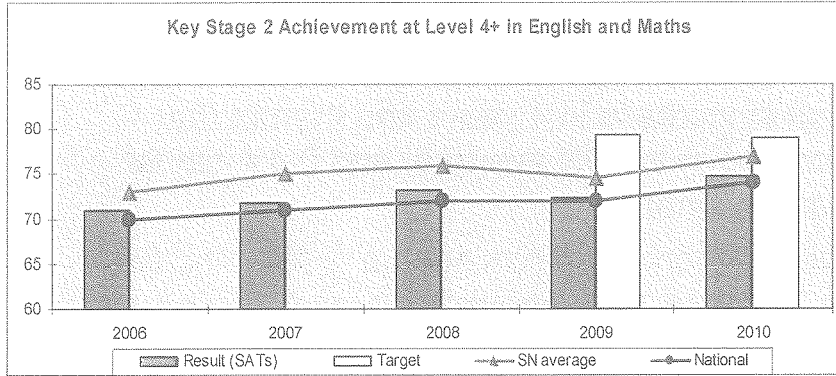
- The overall LA gap has narrowed further to 32.1%, continuing the positive downward trend.
- The gap for Northern Area has also decreased since last year to 29.9% and remains lower than the LA average.
- A significant overall LA rise in EYFS attainment to 59.0%, an increase of 7.6 percentage points.
- At 58.7% the Northern Area is broadly in line with LA average, and though there has been a good increase the rate of increase is below the other two areas.
- Improvements largely due to clearer teacher observation, assessment and use of tracking tools in order to track and record progress and attainment. Children's Centres (CC) also play key role - particularly in disadvantaged areas
- Need to continue development of targeted multi-agency intervention and improve school links with early years settings and CCs.

Working for you

OXFORDSHIRE  
COUNTY COUNCIL  
www.oxfordshire.gov.uk

# Primary

KS2



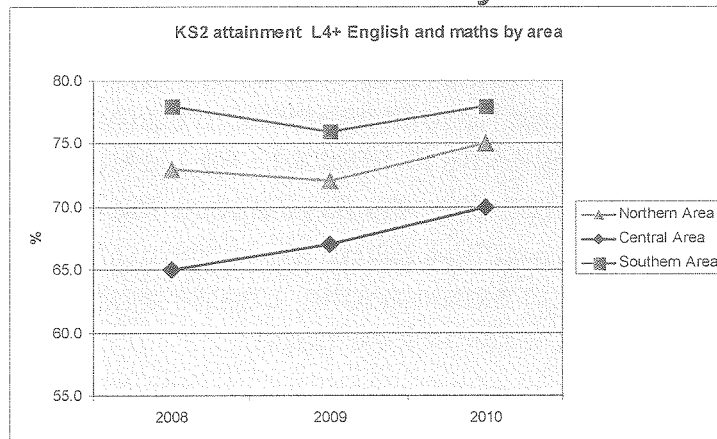
Working for you

OXFORDSHIRE COUNTY COUNCIL  
www.oxfordshire.gov.uk

9

# Primary

KS2



Working for you

OXFORDSHIRE COUNTY COUNCIL  
www.oxfordshire.gov.uk

10

## Primary

- Attainment at KS 2 has risen to 74.8%, an increase of 2.4 percentage points (pp). The largest increase in 4 years and mirrors the increase in the SN average, and 0.4% higher than national.
- The Northern Area has seen a greater increase up 2.9 pp to 75%, above but broadly in line with LA average.

Working for you

 OXFORDSHIRE  
COUNTY COUNCIL  
[www.oxfordshire.gov.uk](http://www.oxfordshire.gov.uk)

11

## Primary interventions

- Intensive support programme, key focus on developing “Successful management systems” alongside improvements in teaching and learning.
- 22 out of 27 targeted schools rose above the floor
- Accelerated progress has taken place through combination of high expectations, quality analysis and targeted teaching to close gaps.

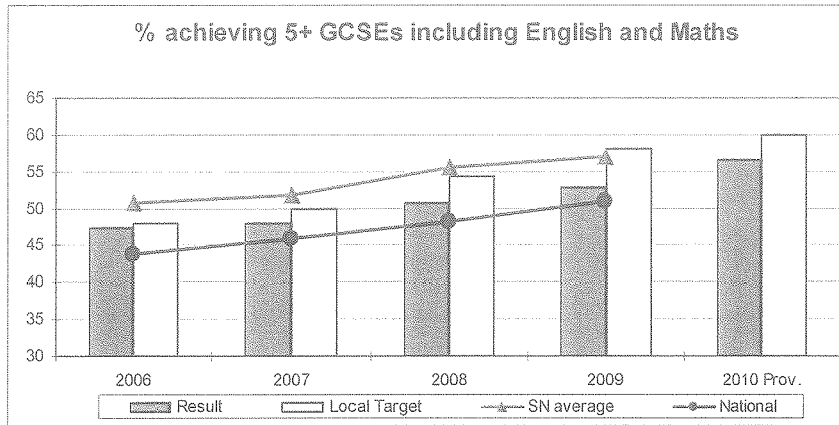
Working for you

 OXFORDSHIRE  
COUNTY COUNCIL  
[www.oxfordshire.gov.uk](http://www.oxfordshire.gov.uk)

12

# Secondary

KS4



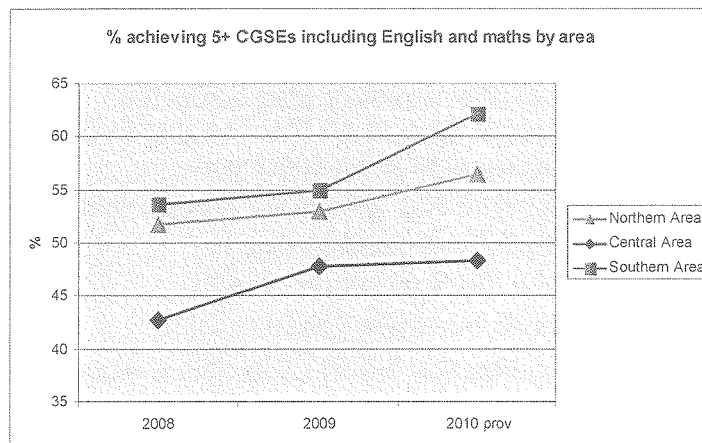
Working for you

**OXFORDSHIRE COUNTY COUNCIL**  
www.oxfordshire.gov.uk

10

# Secondary

KS4

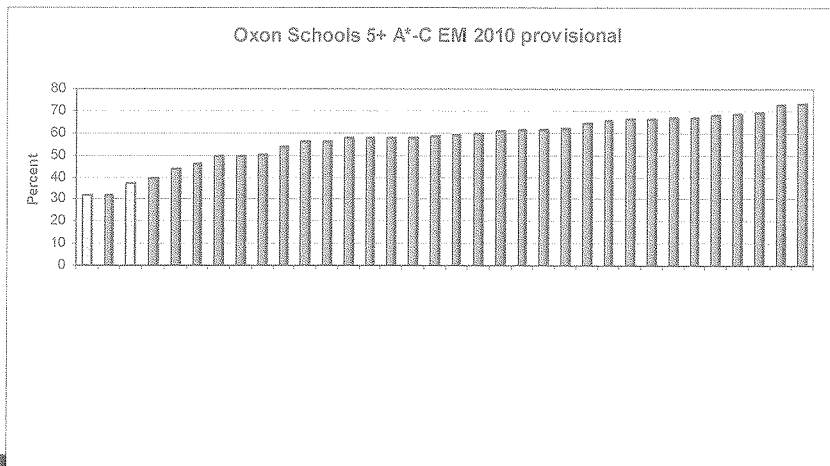


Working for you

**OXFORDSHIRE COUNTY COUNCIL**  
www.oxfordshire.gov.uk

11

## All secondary schools



Working for you

 OXFORDSHIRE  
COUNTY COUNCIL  
www.oxfordshire.gov.uk

15

## Secondary

KS 4

- Biggest rise of 3.7% 5+A\*-C including Eng & maths
- Overall attainment in this measure was below the challenging LA target of 60% at 56.6%. The gap in 2009 was 5.1% so this represents a big reduction
- Northern area attainment has also risen broadly in line with the LA to 56.5 up by 3.5 percentage points.
- No LA schools below the floor target of 30%
- Range of interventions including Class of 2010
- Visit of County councillors to North Oxfordshire Academy

Working for you

 OXFORDSHIRE  
COUNTY COUNCIL  
www.oxfordshire.gov.uk

16



## Ofsted Categories

- Implications of the revised Ofsted framework for schools

Ofsted Grades 09/10	Northern Area	County
Outstanding	10.9%	10.0%
Good	51.3%	55.8%
Satisfactory	36.1%	31.4%
Inadequate	1.7%	2.8%

Working for you

 OXFORDSHIRE  
COUNTY COUNCIL  
[www.oxfordshire.gov.uk](http://www.oxfordshire.gov.uk)

17

## What do we want for the future?

- Headteachers and Governing Bodies to be primarily responsible for school improvement.
- Local champion for children - place in a good local school or early years provision.
- Parents/carers able to exercise choice.
- Education Service ensures high quality provision and informs on commissioning.
- Schools/Settings need to be able to innovate
- Services around schools and settings determined by need.
- The most secure schools our outstanding and good schools should be allowed to become self autonomous and support others.

Working for you

 OXFORDSHIRE  
COUNTY COUNCIL  
[www.oxfordshire.gov.uk](http://www.oxfordshire.gov.uk)

18

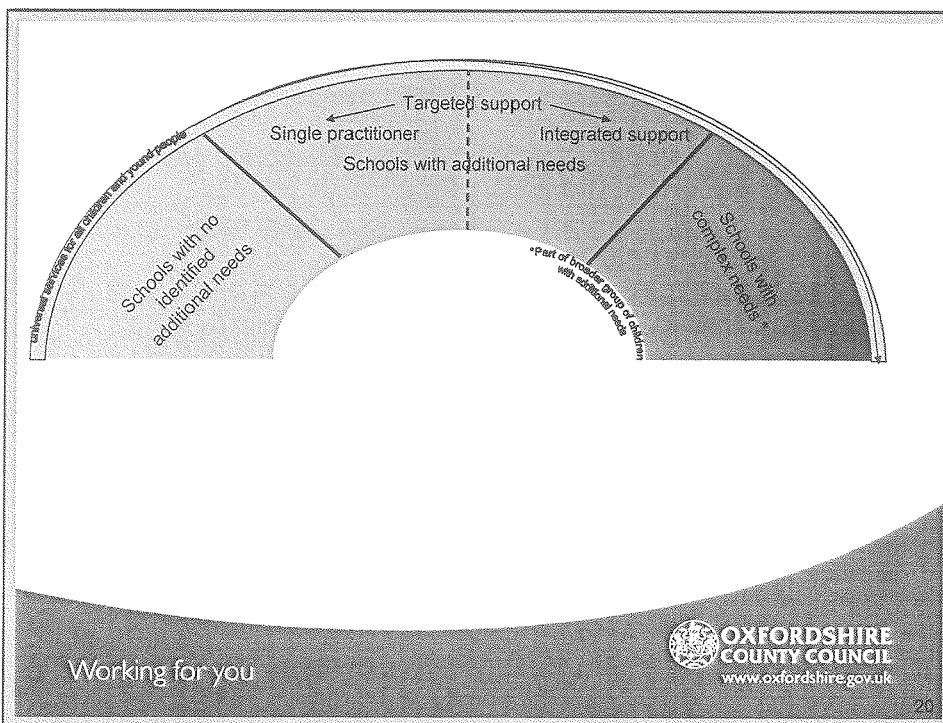
## .....and more.....

- Targeted intervention for schools that are satisfactory, vulnerable and those in an OFSTED category.
- Schools with complex needs- special measures or notice to improve. Bespoke support to be brokered in from other strong schools, outside providers or necessary services.
- All schools engaged in their partnership/ cluster/hub taking responsibility for all our children to create a self improving system of schools (David Hargreaves).
- A mixed economy for delivery.

Working for you

 OXFORDSHIRE  
COUNTY COUNCIL  
www.oxfordshire.gov.uk

19



Working for you

 OXFORDSHIRE  
COUNTY COUNCIL  
www.oxfordshire.gov.uk

20