

BRIEF SPECIFICATION

DESIGN, INSTALLATION, INSPECTION AND TESTING OF ELECTRICS
 All electrical work is required to meet the requirements of Part P (Electrical Safety) and must be designed, installed, inspected and tested by a person competent to do so. Prior to completion, PIR should be installed that Part P has been complied with. An appropriate BS7671 electrical installation certificate shall be issued by a person competent to do so.

PROVISION OF INFORMATION (ELECTRICS)
 Reasonable provision shall be made for the design, installation, inspection and testing of the electrical installation in order to protect persons from fire or injury. This should be carried out by a person competent to do so. Sufficient information shall be provided so that persons visiting to operate, maintain or alter electrical installation can do so with reasonable safety.

GENERAL MATERIALS AND WORKMANSHIP
 All dimensions to be set out and checked on site prior to commencement of work. Any discrepancies or incomplete dimensions should be reported to the client and instructions obtained before proceeding further with the works.

All materials are to be proved fit for incorporation in the walls by conformity with the relevant provisions of an appropriate British Standard and/or by conformity with the relevant standards set out in the Agreement Certificate issued by the BBA.

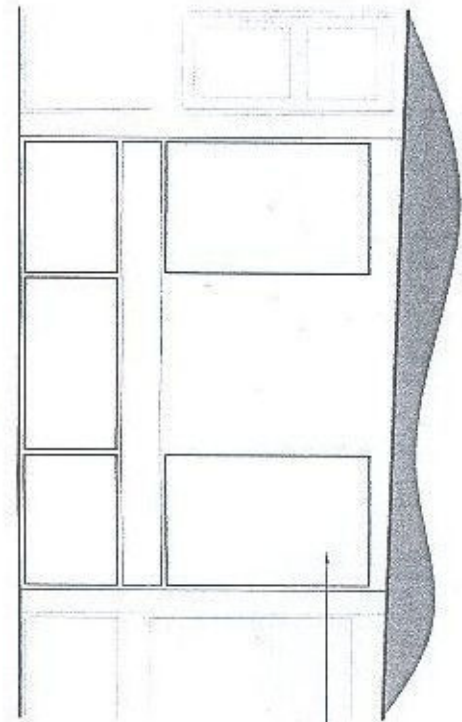
Workmanship shall be carried out in accordance with the recommendations of an appropriate British Standard Code of Practice and/or in accordance with the recommendations for use contained in an appropriate Agreement Certificate.

In addition, the contractor shall confirm with the Building Inspector that, where not specified by reference to a particular manufacturer, materials and workmanship are approved for the locality and that, where necessary, approval of such materials/workmanship is obtained from the Building Inspector.

DRY/DIRT, REDUCTION 'LINDING' EXCESS BUILDING AND AIR LEAKAGE: Robust Details for Heatings and Similar Construction. * must be obtained for continuity of insulation.

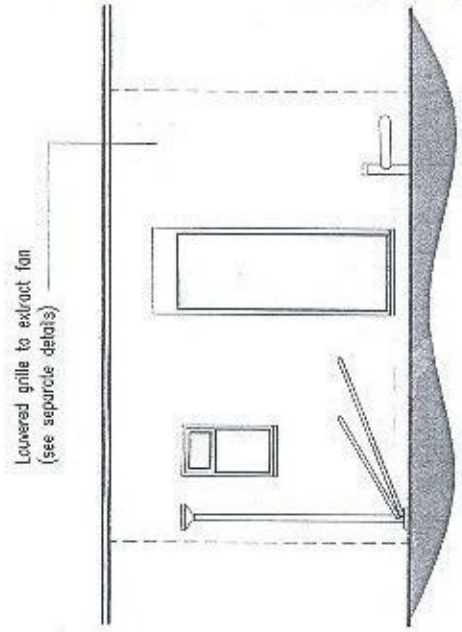
INDIAN PANTRY PRM0576

do not scale



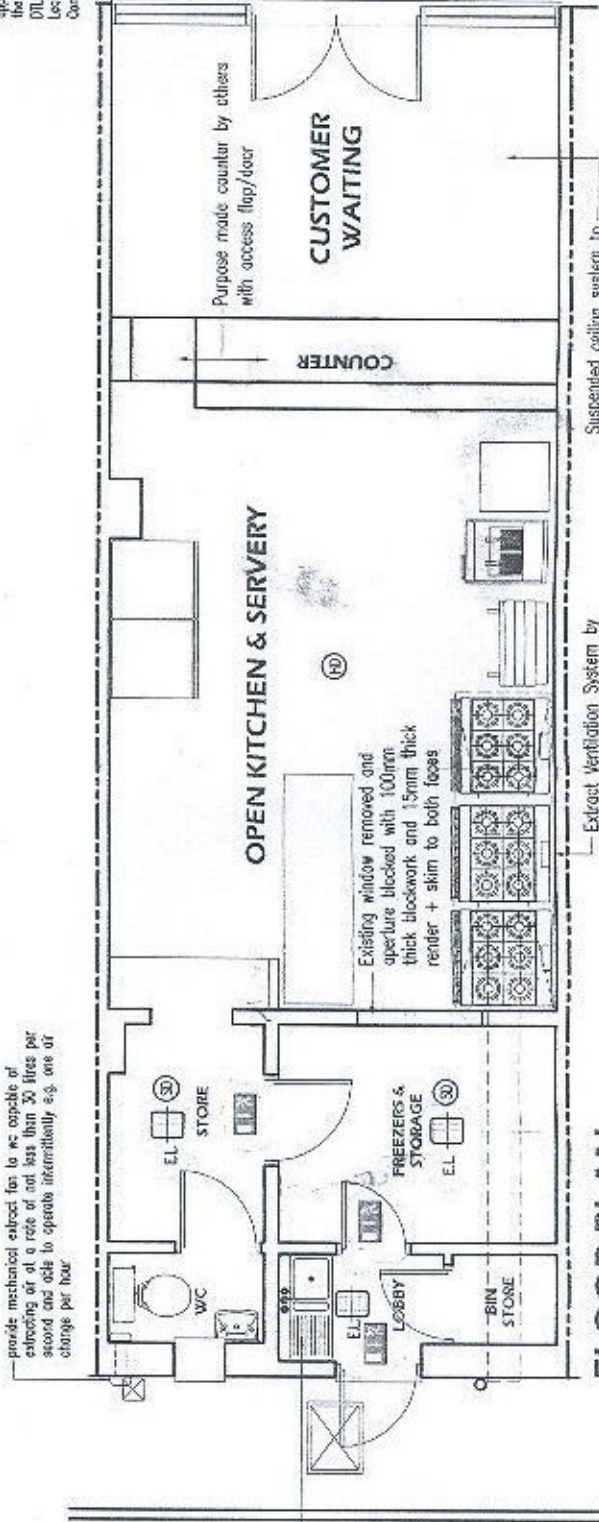
New double glazed entrance (by others) screen to achieve minimum 'U' value of 1.8. All glazing in critical locations should achieve safe breakage to BS6208.

FRONT ELEVATION SCALE 1:50



Louvered grille to extract fan (see separate details)

REAR ELEVATION SCALE 1:50



provide mechanical extract fan to be capable of extracting air at a rate of not less than 30 litres per second and able to operate intermittently e.g. one or change per hour

provide accepts BT200 or similar approved grease trap & interceptor to underside of sink installed strictly in accordance with manufacturers recommendations

Purpose made counter by others with access flap/door

CUSTOMER WAITING

COUNTER

OPEN KITCHEN & SERVERY

Existing window removed and aperture blocked with 100mm thick blockwork and 15mm thick render + skim to both faces

Suspended ceiling system to achieve 60 minute fire rating

Extract Ventilation System by specialist manufacturer (see separate details)

EL = EMERGENCY LIGHT ESCAPE SHROVE TO EACH DOOR

FLOOR PLAN SCALE 1:50

(SD) = DIRECT MANS FED INTERLINKED SMOKE DETECTOR TO BS 5839

(MD) = DIRECT MANS FED INTERLINKED HEAT DETECTOR